



中国认可
国际互认
检测
TESTING
CNAS L11364

TEST REPORT

Report No.: STSGZ2411043119E

Date: 4-Dec-2024

Page 1 of 31

Applicant : Foshan Shunde Lonsun Electrical Appliance Co., Ltd.
Address: No. 22-1 Zhi'an North Road, Changxing Industrial Park, Jun'an Community, Jun'an Town, Shunde, Foshan, Guangdong, China

The following sample(s) and sample information was/were submitted and identified by client as:

Sample Name: Baby Wipe Warmer
Model/Style/Item #: LS-CE010, LS-CE011, LS-CE010A, LS-CE011A, LS-CE013
Additional models: Refer to Appendix A
Receiving Date: 4-Nov-2024, 25-Nov-2024, 28-Nov-2024
Test Period: From 4-Nov-2024 to 2-Dec-2024
Add Information: -

Test Summary:

#	Test Item(s)	Reference Standard/Method	Result
1	Lead, Cadmium, Mercury, Hexavalent Chromium, PBBs, PBDEs, DBP, BBP, DEHP and DIBP EU RoHS Directive 2011/65/EU and its amendment directives (EU) 2015/863 (RoHS)	IEC 62321-3-1:2013 IEC 62321-4:2013+A1:2017 IEC 62321-5:2013 IEC 62321-6:2015 IEC 62321-7-1:2015 IEC 62321-7-2:2017 IEC 62321-8:2017	PASS

Signed for and on behalf of STS

Mark Mai
(Technical Director)



This report is issued by the company in accordance with the requirements of the "Conditions of Issuance of Test Reports" printed in the attached page. Unless otherwise stated, the results presented in this report only apply to the samples tested this time. Partial reproduction of this report is not allowed unless approved by the company in writing.

Guangzhou Depuhua Test Services Co. Ltd.

A301&A401, 3/F.&4/F., Xinghui Building, Guanqiao, Shilou, Panyu District, Guangzhou, Guangdong, China
 Phone: +86 (0)20-84503814 Fax: +86 (0)20-6664 1699

e-mail: dphrp@dphl.com
 Web: http://www.dphl.com



中国认可
国际互认
检测
TESTING
CNAS L11364

TEST REPORT

Report No.: STSGZ2411043119E

Date: 4-Dec-2024

Page 2 of 31

Result:

1.1 EU RoHS Directive 2011/65/EU and its amendment directives on XRF IEC 62321-3-1:2013, Screening by X-ray Fluorescence Spectroscopy (XRF)

Seq. No.	Tested Part(s)	Results				
		Pb	Cd	Hg	Cr	Br
1	Brown coating, icon	BL	BL	BL	BL	BL
2	Creamy white plastic, shell	BL	BL	BL	BL	BL
3	Transparent plastic, shell	BL	BL	BL	BL	BL
4	Golden coating, snap joint	BL	BL	BL	BL	BL
5	Creamy white plastic, snap joint	BL	BL	BL	BL	BL
6	Brown PU, lifting handle	BL	BL	BL	BL	BL
7	Black adhesive plaster foam, cushion	BL	BL	BL	BL	BL
8	Silvery metal,screw	BL	BL	BL	X	NA
9	White soft plastic, sealing ring	BL	BL	BL	BL	BL
10	Brown plastic, inside	BL	BL	BL	BL	BL
11	Silvery metal,axle	BL	BL	BL	BL	NA
12	Silvery metal,flat head screw	BL	BL	BL	X	NA
13	Silvery metal,aluminum tape	X	BL	BL	BL	NA
14	Black plastic, connector	BL	BL	BL	BL	BL
15	Black plastic, shell	BL	BL	BL	BL	BL
16	Black plastic, shell	BL	BL	BL	BL	BL
17	Silvery metal,contact plate	BL	BL	BL	BL	NA
18	Silvery metal,contact pin	BL	BL	BL	BL	NA
19	Silvery metal,contact plate	BL	BL	BL	BL	NA
20	Blue transparent soft plastic, heat shrink tubing	BL	BL	BL	BL	BL
21	White glass fibre,wire jacket	BL	BL	BL	BL	BL
22	Silvery metal,wire core	BL	BL	BL	BL	NA
23	Silvery metal,contact plate	BL	BL	BL	BL	NA
24	White plastic, snap joint	BL	BL	BL	BL	BL

This report is issued by the company in accordance with the requirements of the "Conditions of Issuance of Test Reports" printed in the attached page. Unless otherwise stated, the results presented in this report only apply to the samples tested this time. Partial reproduction of this report is not allowed unless approved by the company in writing.

Guangzhou Depuhua Test Services Co. Ltd.

A301&A401, 3/F.&4/F., Xinghui Building, Guanqiao, Shilou, Panyu District, Guangzhou, Guangdong, China
Phone:+86 (0)20-84503814 Fax: +86 (0)20-6664 1699

e-mail: dphrp@dphl.com
Web:http://www.dphl.com



中国认可
国际互认
检测
TESTING
CNAS L11364

TEST REPORT

Report No.: STSGZ2411043119E

Date: 4-Dec-2024

Page 3 of 31

25	Black plastic, snap joint	BL	BL	BL	BL	BL
26	Silvery metal,contact pin	BL	BL	BL	BL	NA
27	Black soft plastic, heat shrink tubing	BL	BL	BL	BL	BL
28	Black soft plastic, wire jacket	BL	BL	BL	BL	BL
29	Silvery metal,wire core	BL	BL	BL	BL	NA
30	Red soft plastic, wire jacket	BL	BL	BL	BL	BL
31	Silvery metal, solder	BL	BL	BL	BL	NA
32	White plastic, nylon cable tie	BL	BL	BL	BL	BL
33	Silvery metal, spring	BL	BL	BL	X	NA
34	White semitransparent plastic, LED	BL	BL	BL	BL	X
35	Silvery metal,contact plate	BL	BL	BL	BL	NA
36	White plastic, snap joint	BL	BL	BL	BL	BL
37	Red plastic, snap joint	BL	BL	BL	BL	BL
38	Black plastic, snap joint	BL	BL	BL	BL	BL
39	Silvery metal,contact pin	BL	BL	BL	BL	NA
40	Black plastic, cover	BL	BL	BL	BL	BL
41	Golden metal sheet, small	BL	BL	BL	BL	NA
42	White ceramic, piece	X	BL	BL	BL	NA
43	Silvery metal,contact pin	BL	BL	BL	BL	NA
44	Silvery metal, lead	BL	BL	BL	BL	NA
45	Brick red plastic, cover	BL	BL	BL	BL	BL
46	Silvery metal, fuse	BL	BL	BL	BL	NA
47	White fiber, fuse	BL	BL	BL	BL	BL
48	Black plastic, base	BL	BL	BL	BL	BL
49	Silvery metal, lead	BL	BL	BL	BL	NA
50	Black body,IC	BL	BL	BL	BL	BL
51	Black body,mos	BL	BL	BL	BL	BL
52	Yellow body, capacitance	BL	BL	BL	BL	BL
53	Black body, resistance	BL	BL	BL	BL	BL

This report is issued by the company in accordance with the requirements of the "Conditions of Issuance of Test Reports" printed in the attached page. Unless otherwise stated, the results presented in this report only apply to the samples tested this time. Partial reproduction of this report is not allowed unless approved by the company in writing.

Guangzhou Depuhua Test Services Co. Ltd.

A301&A401, 3/F.&4/F., Xinghui Building, Guanqiao, Shilou, Panyu District, Guangzhou, Guangdong, China
Phone:+86 (0)20-84503814 Fax: +86 (0)20-6664 1699

e-mail: dphrp@dphl.com
Web:http://www.dphl.com



中国认可
国际互认
检测
TESTING
CNAS L11364

TEST REPORT

Report No.: STSGZ2411043119E

Date: 4-Dec-2024

Page 4 of 31

54	Silvery metal, tin soldering	BL	BL	BL	BL	NA
55	Silvery metal, tin soldering	BL	BL	BL	BL	NA
56	Green PCB	BL	BL	BL	BL	X
57	White soft plastic, shell	BL	BL	BL	BL	BL
58	Silvery metal, shell	BL	BL	BL	BL	NA
59	Black plastic, bracket	BL	BL	BL	BL	BL
60	Silvery metal,contact pin	BL	BL	BL	BL	NA
61	Gray printing soft plastic, wire jacket	BL	BL	BL	BL	BL
62	Coppery metal , wire core	BL	BL	BL	BL	NA
63	White soft plastic, tail immobilization	BL	BL	BL	BL	BL
64	White plastic, shell	BL	BL	BL	BL	BL
65	Silvery metal,screw	BL	BL	BL	X	NA
66	Silvery metal,nut	BL	BL	BL	BL	NA
67	Silvery metal,contact pin	BL	BL	BL	BL	NA
68	Silvery metal, nut	BL	BL	BL	BL	NA
69	Silvery metal,circle	BL	BL	BL	BL	NA
70	Silvery metal,piece	BL	BL	BL	BL	NA
71	Silvery metal,lid	BL	BL	BL	BL	NA
72	Transparent glass,pipe	BL	BL	BL	BL	NA
73	Silvery metal,fuse	BL	BL	BL	BL	NA
74	Silvery metal,spring	BL	BL	BL	X	NA
75	Silvery metal,bracket	BL	BL	BL	BL	NA
76	Silvery metal, tin soldering	BL	BL	BL	BL	NA
77	Red soft plastic, wire jacket	BL	BL	BL	BL	BL
78	Black soft plastic, wire jacket	BL	BL	BL	BL	BL
79	White soft plastic, shell	BL	BL	BL	BL	BL
80	Silvery metal,shell	BL	BL	BL	BL	NA
81	Black plastic, bracket	BL	BL	BL	BL	BL
82	Silvery metal,contact pin	BL	BL	BL	BL	NA

This report is issued by the company in accordance with the requirements of the "Conditions of Issuance of Test Reports" printed in the attached page. Unless otherwise stated, the results presented in this report only apply to the samples tested this time. Partial reproduction of this report is not allowed unless approved by the company in writing.

Guangzhou Depuhua Test Services Co. Ltd.

A301&A401, 3/F.&4/F., Xinghui Building, Guanqiao, Shilou, Panyu District, Guangzhou, Guangdong, China
Phone:+86 (0)20-84503814 Fax: +86 (0)20-6664 1699

e-mail: dphrp@dphl.com
Web:http://www.dphl.com



中国认可
国际互认
检测
TESTING
CNAS L11364

TEST REPORT

Report No.: STSGZ2411043119E

Date: 4-Dec-2024

Page 5 of 31

83	Gray printing matt white soft plastic, wire jacket	BL	BL	BL	BL	BL
84	Gray coating, label	BL	BL	BL	BL	BL
85	White plastic, shell	BL	BL	BL	BL	BL
86	Silvery metal,contact pin	X	BL	BL	BL	NA
87	White soft plastic, tail immobilization	BL	BL	BL	BL	BL
88	Black plastic, spacer	BL	BL	BL	BL	BL
89	Silvery metal,contact plate	BL	BL	BL	BL	NA
90	White self-adhesive sticker	BL	BL	BL	BL	BL
91	Silvery metal,contact plate	BL	BL	BL	BL	NA
92	blue body, resistance	BL	BL	BL	BL	BL
93	Yellow body, resistance	BL	BL	BL	BL	BL
94	Black body, capacitance	BL	BL	BL	BL	BL
95	White printing Black soft plastic, shell	BL	BL	BL	BL	BL
96	Black magnet, bracket	BL	BL	BL	BL	NA
97	Coppery metal , coil	BL	BL	BL	BL	NA
98	Golden printed green plastic, cover	BL	BL	BL	BL	BL
99	White printed black plastic, cover	BL	BL	BL	BL	BL
100	Silvery metal, shell	BL	BL	BL	BL	NA
101	Transparent adhesive tape	BL	BL	BL	BL	BL
102	Beige paper, electrolytic paper	BL	BL	BL	BL	BL
103	Silvery grey metal foil	BL	BL	BL	BL	NA
104	Black soft plastic, stopper	BL	BL	BL	BL	BL
105	Silvery metal, electrode	BL	BL	BL	BL	NA
106	Silvery metal, lead	BL	BL	BL	BL	NA
107	Yellow plastic adhesive tape, cover	BL	BL	BL	BL	BL
108	Black plastic, holder	BL	BL	BL	BL	BL
109	Black magnet, holder	BL	BL	BL	BL	NA
110	Coppery enamelled wire, thick	BL	BL	BL	BL	BL
111	Coppery enamelled wire, thin	BL	BL	BL	BL	BL

This report is issued by the company in accordance with the requirements of the "Conditions of Issuance of Test Reports" printed in the attached page. Unless otherwise stated, the results presented in this report only apply to the samples tested this time. Partial reproduction of this report is not allowed unless approved by the company in writing.

Guangzhou Depuhua Test Services Co. Ltd.

A301&A401, 3/F.&4/F., Xinghui Building, Guanqiao, Shilou, Panyu District, Guangzhou, Guangdong, China
Phone:+86 (0)20-84503814 Fax: +86 (0)20-6664 1699

e-mail: dphrp@dphl.com
Web:http://www.dphl.com



中国认可
国际互认
检测
TESTING
CNAS L11364

TEST REPORT

Report No.: STSGZ2411043119E

Date: 4-Dec-2024

Page 6 of 31

112	Silvery metal, lead	BL	BL	BL	BL	NA
113	Yellow body, capacitance	BL	BL	BL	BL	BL
114	Black body, resistance	BL	BL	BL	BL	BL
115	Black body, IC	BL	BL	BL	BL	BL
116	Black body, diode	BL	BL	BL	BL	BL
117	Green PCB	BL	BL	BL	BL	X
118	Silvery metal, tin soldering	BL	BL	BL	BL	NA
119	Silvery metal, tin soldering	BL	BL	BL	BL	NA
120	White plastic, shell	BL	BL	BL	BL	BL
121	Gray soft plastic, handle	BL	BL	BL	BL	BL
122	Silvery metal,screw	BL	BL	BL	X	NA
123	White soft plastic, cushion	BL	BL	BL	BL	BL
124	Silvery metal, magnet	BL	BL	BL	BL	NA
125	Gray plastic, inside	BL	BL	BL	BL	BL
126	Silvery metal,flat head screw	BL	BL	BL	X	NA
127	Green plastic, bracket	BL	BL	BL	BL	BL
128	Black coating, paster	BL	BL	BL	BL	BL
129	Green paper, paster	BL	BL	BL	BL	BL
130	transparent plastic, membranae tectoria	BL	BL	BL	BL	BL
131	Yellow body, LED	BL	BL	BL	BL	X
132	White plastic, shell	BL	BL	BL	BL	BL
133	Silvery metal, lead	BL	BL	BL	BL	NA
134	Silvery metal, thin spring	BL	BL	BL	X	NA
135	White plastic, shell	BL	BL	BL	BL	BL
136	Silvery metal,contact pin	BL	BL	BL	BL	NA
137	Black body, IC	BL	BL	BL	BL	BL
138	Yellow body, capacitance	BL	BL	BL	BL	BL
139	Black body, resistance	BL	BL	BL	BL	BL
140	Silvery metal, tin soldering	BL	BL	BL	BL	NA

This report is issued by the company in accordance with the requirements of the "Conditions of Issuance of Test Reports" printed in the attached page. Unless otherwise stated, the results presented in this report only apply to the samples tested this time. Partial reproduction of this report is not allowed unless approved by the company in writing.

Guangzhou Depuhua Test Services Co. Ltd.

A301&A401, 3/F.&4/F., Xinghui Building, Guanqiao, Shilou, Panyu District, Guangzhou, Guangdong, China
Phone:+86 (0)20-84503814 Fax: +86 (0)20-6664 1699

e-mail: dphrp@dphl.com
Web:http://www.dphl.com



中国认可
国际互认
检测
TESTING
CNAS L11364

TEST REPORT

Report No.: STSGZ2411043119E

Date: 4-Dec-2024

Page 7 of 31

141	Silvery metal, tin soldering	BL	BL	BL	BL	NA
142	Green PCB	BL	BL	BL	BL	X
143	White glass fibre,protective jacket	BL	BL	BL	BL	BL
144	White semitransparent soft plastic, heat shrink tubing	BL	BL	BL	BL	BL
145	White transparency soft plastic, heat shrink tubing	BL	BL	BL	BL	BL
146	Pink printing white soft plastic, wire jacket	BL	BL	BL	BL	BL
147	Black soft plastic, wire jacket	BL	BL	BL	BL	BL
148	Brick red soft plastic, wire jacket	BL	BL	BL	BL	BL
149	blue soft plastic, wire jacket	BL	BL	BL	BL	BL
150	brown soft plastic, wire jacket	BL	BL	BL	BL	BL
151	Silvery metal , wire core	BL	BL	BL	BL	NA
152	Coppery metal , wire core	BL	BL	BL	BL	NA
153	Brick red plastic, shell	BL	BL	BL	BL	BL
154	yellow self-adhesive sticker	BL	BL	BL	BL	BL
155	White plastic, flat cable	BL	BL	BL	BL	BL
156	Silvery metal, tin soldering	BL	BL	BL	BL	NA
157	Color printing gray body,capacitance	BL	BL	BL	BL	BL
158	Color printing green body,capacitance	BL	BL	BL	BL	BL
159	blue body, resistance	BL	BL	BL	BL	BL
160	Silvery metal, lead	BL	BL	BL	BL	NA
161	Silvery metal, contact plate	BL	BL	BL	BL	NA
162	Gray printing yellow plastic, shell	BL	BL	BL	BL	BL
163	Yellow resin, seal	BL	BL	BL	BL	BL
164	Silvery gray plastic film	BL	BL	BL	BL	BL
165	Silvery metal, lead	BL	BL	BL	BL	NA
166	Black body, IC	BL	BL	BL	BL	BL
167	Black body, mos	BL	BL	BL	BL	BL
168	Black body, resistance	BL	BL	BL	BL	BL
169	Yellow body, capacitance	BL	BL	BL	BL	BL

This report is issued by the company in accordance with the requirements of the "Conditions of Issuance of Test Reports" printed in the attached page. Unless otherwise stated, the results presented in this report only apply to the samples tested this time. Partial reproduction of this report is not allowed unless approved by the company in writing.

Guangzhou Depuhua Test Services Co. Ltd.

A301&A401, 3/F.&4/F., Xinghui Building, Guanqiao, Shilou, Panyu District, Guangzhou, Guangdong, China
Phone:+86 (0)20-84503814 Fax: +86 (0)20-6664 1699

e-mail: dphrp@dphl.com
Web: http://www.dphl.com



中国认可
国际互认
检测
TESTING
CNAS L11364

TEST REPORT

Report No.: STSGZ2411043119E

Date: 4-Dec-2024

Page 8 of 31

170	Silvery metal, tin soldering	BL	BL	BL	BL	NA
171	Silvery metal, tin soldering	BL	BL	BL	BL	NA
172	Green PCB	BL	BL	BL	BL	X
173	White soft plastic, wire jacket	BL	BL	BL	BL	BL
174	White plastic, shell	BL	BL	BL	BL	BL
175	Creamy white plastic, shell	BL	BL	BL	BL	BL
176	Silvery metal, contact pin	X	BL	BL	BL	NA
177	White semitransparent soft plastic, wire jacket	BL	BL	BL	BL	BL
178	White self-adhesive sticker	BL	BL	BL	BL	BL
179	White semitransparent soft plastic, protective jacket	BL	BL	BL	BL	BL
180	Coppery metal, contact pin	BL	BL	BL	BL	NA
181	Golden metal, holder	BL	BL	BL	BL	NA
182	Red glass, diode	X	BL	BL	BL	NA

Remark:

- (1) Results were obtained by XRF for primary screening, and further chemical testing by ICP (for Cd, Pb, Hg), UV-Vis (for Cr(VI)) and GC-MS (for PBBs, PBDEs) are recommended to be performed, if the concentration exceeds the below warning value according to IEC 62321-3-1:2013.

Element	Unit	Non-metal	Metal	Composite Material
Cd	mg/kg	$BL \leq 70 - 3\sigma < X < 130 + 3\sigma \leq OL$	$BL \leq 70 - 3\sigma < X < 130 + 3\sigma \leq OL$	$BL \leq 50 - 3\sigma < X < 150 + 3\sigma \leq OL$
Pb	mg/kg	$BL \leq 700 - 3\sigma < X < 1300 + 3\sigma \leq OL$	$BL \leq 700 - 3\sigma < X < 1300 + 3\sigma \leq OL$	$BL \leq 500 - 3\sigma < X < 1500 + 3\sigma \leq OL$
Hg	mg/kg	$BL \leq 700 - 3\sigma < X < 1300 + 3\sigma \leq OL$	$BL \leq 700 - 3\sigma < X < 1300 + 3\sigma \leq OL$	$BL \leq 500 - 3\sigma < X < 1500 + 3\sigma \leq OL$
Cr	mg/kg	$BL \leq 700 - 3\sigma < X$	$BL \leq 700 - 3\sigma < X$	$BL \leq 500 - 3\sigma < X$
Br	mg/kg	$BL \leq 300 - 3\sigma < X$	--	$BL \leq 250 - 3\sigma < X$

Note:

BL = Below Limit

OL = Over Limit

X = Inconclusive

This report is issued by the company in accordance with the requirements of the "Conditions of Issuance of Test Reports" printed in the attached page. Unless otherwise stated, the results presented in this report only apply to the samples tested this time. Partial reproduction of this report is not allowed unless approved by the company in writing.



中国认可
国际互认
检测
TESTING
CNAS L11364

TEST REPORT

Report No.: STSGZ2411043119E

Date: 4-Dec-2024

Page 9 of 31

NA = Not Applicable

- (2) The XRF screening test for RoHS elements – The reading may be different to the actual content in the sample be of non-uniformity composition.
- (3) The maximum permissible limit is quoted from the document 2011/65/EU and its amendment directives (EU) 2015/863 :

RoHS Restricted Substances	Maximum Concentration Value (mg/kg) (by weight in homogenous materials)
Cadmium (Cd)	100
Lead (Pb)	1000
Mercury (Hg)	1000
Hexavalent Chromium (Cr(VI))	1000
Polybrominated biphenyls (PBBs)	1000
Polybrominated diphenyl ethers (PBDEs)	1000

(4) Disclaimers:

This XRF Screening report is for reference purposes only. The applicant shall make its/his/her own judgment as to whether the information provided in this XRF screening report is sufficient for its/his/her purposes. The result shown in this XRF screening report will differ based on various factors, including but not limited to, the sample size, thickness, area, surface flatness, equipment parameters and matrix effect(e.g. plastic, rubber, metal, glass, ceramic etc.). Further wet chemical pre-treatment with relevant chemical equipment analysis are required to obtain quantitative data.

- (5) The selection of test portions was recommended by the client and the conclusion of chemical test is only for the selected portions.
- (6) Materials #156 is the test results of the resubmitted sample.

1.2 Hexavalent Chromium (Cr(VI))

Metal: IEC 62321-7-1:2015, extracted by boiling water and analyzed by UV-Vis

Non-metal: IEC 62321-7-2:2017, alkaline digested and analyzed by UV-Vis

Compound	Material				Limit	RL
	8	12	33	65		
1 Hexavalent Chromium (Cr(VI))	Negative	Negative	Negative	Negative	#	-
Conclusion	PASS	PASS	PASS	PASS	-	-

This report is issued by the company in accordance with the requirements of the "Conditions of Issuance of Test Reports" printed in the attached page. Unless otherwise stated, the results presented in this report only apply to the samples tested this time. Partial reproduction of this report is not allowed unless approved by the company in writing.

Guangzhou Depuhua Test Services Co. Ltd.

A301&A401, 3/F.&4/F., Xinghui Building, Guanqiao, Shilou, Panyu District, Guangzhou, Guangdong, China
Phone: +86 (0)20-84503814 Fax: +86 (0)20-6664 1699

e-mail: dphrp@dphl.com
Web: http://www.dphl.com



中国认可
国际互认
检测
TESTING
CNAS L11364

TEST REPORT

Report No.: STSGZ2411043119E

Date: 4-Dec-2024

Page 10 of 31

Compound	Material				Limit	RL
	74	122	126	134		
1 Hexavalent Chromium (Cr(VI))	Negative	Negative	Negative	Negative	#	-
Conclusion	PASS	PASS	PASS	PASS	-	-

Remark(s) (a) ug/cm²: microgram per square centimeter
 (b) RL: Report Limit
 (c) Negative = Sample Cr(VI) concentration is less than 0.10 ug/cm²
 Positive = Sample Cr(VI) concentration is greater than 0.13 ug/cm²
 (d) # = Positive indicates the presence of Cr(VI) on the tested areas and result be regarded as conflict with RoHS requirement.
 Negative indicates the presence of Cr(VI) on the tested areas and result be regarded as no conflict with RoHS requirement.

1.3 Lead Content (Pb) IEC62321-5:2013, acid digested and determined by AAS

Compound	Material					Limit (mg/kg)	RL (mg/kg)
	13	42	86	176	182		
1 Lead (Pb)	40	19841	27964	20341	19255	1000	10
Conclusion	PASS	PASS**	PASS*	PASS*	PASS**	-	-

Remark(s): (a) * = Copper alloy containing up to 4% lead by weight
 (b) mg/kg: milligrams per kilogram
 (c) RL: Report limit
 (d) N.D.: Not detected (result is less than RL)
 (e) **=Lead in a glass or ceramic other than dielectric ceramic in capacitors (piezoelectronic devices) or in a glass or ceramic matrix compound.

1.4 Polybrominated Biphenyls and Polybrominated Diphenyl Ethers (PBBs and PBDEs) IEC 62321-6:2015, solvent extract and determined by GC/MS

Compound	Material						Limit (mg/kg)	RL (mg/kg)
	34	56	117	131	142	172		
1 Monobromo biphenyl	N.D.	N.D.	N.D.	N.D.	N.D.	N.D.	-	50
2 Dibromo biphenyl	N.D.	N.D.	N.D.	N.D.	N.D.	N.D.	-	50
3 Tribromo biphenyl	N.D.	N.D.	N.D.	N.D.	N.D.	N.D.	-	50

This report is issued by the company in accordance with the requirements of the "Conditions of Issuance of Test Reports" printed in the attached page. Unless otherwise stated, the results presented in this report only apply to the samples tested this time. Partial reproduction of this report is not allowed unless approved by the company in writing.

Guangzhou Depuhua Test Services Co. Ltd.

A301&A401, 3/F.&4/F., Xinghui Building, Guanqiao, Shilou, Panyu District, Guangzhou, Guangdong, China
 Phone:+86 (0)20-84503814 Fax: +86 (0)20-6664 1699

e-mail: dphrp@dphl.com
 Web: http://www.dphl.com



中国认可
国际互认
检测
TESTING
CNAS L11364

TEST REPORT

Report No.: STSGZ2411043119E

Date: 4-Dec-2024

Page 11 of 31

4	Tetrabromo biphenyl	N.D.	N.D.	N.D.	N.D.	N.D.	N.D.	-	50
5	Pentabromo biphenyl	N.D.	N.D.	N.D.	N.D.	N.D.	N.D.	-	50
6	Hexabromo biphenyl	N.D.	N.D.	N.D.	N.D.	N.D.	N.D.	-	50
7	Heptabromo biphenyl	N.D.	N.D.	N.D.	N.D.	N.D.	N.D.	-	50
8	Octabromo biphenyl	N.D.	N.D.	N.D.	N.D.	N.D.	N.D.	-	50
9	Nonabromo biphenyl	N.D.	N.D.	N.D.	N.D.	N.D.	N.D.	-	50
10	Decabromo biphenyl	N.D.	N.D.	N.D.	N.D.	N.D.	N.D.	-	50
11	Monobromo diphenyl ether	N.D.	N.D.	N.D.	N.D.	N.D.	N.D.	-	50
12	Dibromo diphenyl ether	N.D.	N.D.	N.D.	N.D.	N.D.	N.D.	-	50
13	Tribromo diphenyl ether	N.D.	N.D.	N.D.	N.D.	N.D.	N.D.	-	50
14	Tetrabromo diphenyl ether	N.D.	N.D.	N.D.	N.D.	N.D.	N.D.	-	50
15	Pentabromo diphenyl ether	N.D.	N.D.	N.D.	N.D.	N.D.	N.D.	-	50
16	Hexabromo diphenyl ether	N.D.	N.D.	N.D.	N.D.	N.D.	N.D.	-	50
17	Heptabromo diphenyl ether	N.D.	N.D.	N.D.	N.D.	N.D.	N.D.	-	50
18	Octabromo diphenyl ether	N.D.	N.D.	N.D.	N.D.	N.D.	N.D.	-	50
19	Nonabromo diphenyl ether	N.D.	N.D.	N.D.	N.D.	N.D.	N.D.	-	50
20	Decabromo diphenyl ether	N.D.	N.D.	N.D.	N.D.	N.D.	N.D.	-	50
21	Sum of PBBs	N.D.	N.D.	N.D.	N.D.	N.D.	N.D.	1000	-
22	Sum of PBDEs	N.D.	N.D.	N.D.	N.D.	N.D.	N.D.	1000	-
	Conclusion	PASS	PASS	PASS	PASS	PASS	PASS	-	-

Remark(s): (a) mg/kg: milligram per kilogram
(b) RL: Report limit
(c) N.D.: Not detected (result is less than RL)

This report is issued by the company in accordance with the requirements of the "Conditions of Issuance of Test Reports" printed in the attached page. Unless otherwise stated, the results presented in this report only apply to the samples tested this time. Partial reproduction of this report is not allowed unless approved by the company in writing.

Guangzhou Depuhua Test Services Co. Ltd.

A301&A401, 3/F.&4/F., Xinghui Building, Guanqiao, Shilou, Panyu District, Guangzhou, Guangdong, China
Phone: +86 (0)20-84503814 Fax: +86 (0)20-6664 1699

e-mail: dphrp@dphl.com
Web: http://www.dphl.com



中国认可
国际互认
检测
TESTING
CNAS L11364

TEST REPORT

Report No.: STSGZ2411043119E

Date: 4-Dec-2024

Page 12 of 31

1.5 Phthalates – (DBP, BBP, DEHP, DIBP) IEC 62321-8:2017, Solvent extract and determined by GC/MS

Compound			Material				Limit (%)	RL(%)
			1	2+5	3	4		
1	DBP	Dibutylphthalate CAS# 84-74-2	N.D.	N.D.	N.D.	N.D.	0.1	0.005
2	BBP	Benzylbutylphthalate CAS# 85-68-7	N.D.	N.D.	N.D.	N.D.	0.1	0.005
3	DEHP	Diethylhexylphthalate CAS# 117-81-7	N.D.	N.D.	N.D.	N.D.	0.1	0.005
4	DIBP	Diisobutyl phthalate CAS# 84-69-5	N.D.	N.D.	N.D.	N.D.	0.1	0.005
Conclusion			PASS	PASS	PASS	PASS	-	-

Compound			Material				Limit (%)	RL(%)
			6	7	9	10		
1	DBP	Dibutylphthalate CAS# 84-74-2	N.D.	N.D.	N.D.	N.D.	0.1	0.005
2	BBP	Benzylbutylphthalate CAS# 85-68-7	N.D.	N.D.	N.D.	N.D.	0.1	0.005
3	DEHP	Diethylhexylphthalate CAS# 117-81-7	N.D.	N.D.	N.D.	N.D.	0.1	0.005
4	DIBP	Diisobutyl phthalate CAS# 84-69-5	N.D.	N.D.	N.D.	N.D.	0.1	0.005
Conclusion			PASS	PASS	PASS	PASS	-	-

Compound			Material				Limit (%)	RL(%)
			14+15+16	20	21	24+36		
1	DBP	Dibutylphthalate CAS# 84-74-2	N.D.	0.018	N.D.	N.D.	0.1	0.005
2	BBP	Benzylbutylphthalate CAS# 85-68-7	N.D.	N.D.	N.D.	N.D.	0.1	0.005
3	DEHP	Diethylhexylphthalate CAS# 117-81-7	N.D.	N.D.	N.D.	N.D.	0.1	0.005
4	DIBP	Diisobutyl phthalate CAS# 84-69-5	N.D.	N.D.	N.D.	N.D.	0.1	0.005
Conclusion			PASS	PASS	PASS	PASS	-	-

This report is issued by the company in accordance with the requirements of the "Conditions of Issuance of Test Reports" printed in the attached page. Unless otherwise stated, the results presented in this report only apply to the samples tested this time. Partial reproduction of this report is not allowed unless approved by the company in writing.

Guangzhou Depuhua Test Services Co. Ltd.

A301&A401, 3/F.&4/F., Xinghui Building, Guanqiao, Shilou, Panyu District, Guangzhou, Guangdong, China
Phone: +86 (0)20-84503814 Fax: +86 (0)20-6664 1699

e-mail: dphrp@dphl.com
Web: http://www.dphtl.com



中国认可
国际互认
检测
TESTING
CNAS L11364

TEST REPORT

Report No.: STSGZ2411043119E

Date: 4-Dec-2024

Page 13 of 31

Compound			Material				Limit (%)	RL(%)
			25+38	27+28+30	32	34+37		
1	DBP	Dibutylphthalate CAS# 84-74-2	N.D.	N.D.	N.D.	N.D.	0.1	0.005
2	BBP	Benzylbutylphthalate CAS# 85-68-7	N.D.	N.D.	N.D.	N.D.	0.1	0.005
3	DEHP	Diethylhexylphthalate CAS# 117-81-7	N.D.	N.D.	N.D.	N.D.	0.1	0.005
4	DIBP	Diisobutyl phthalate CAS# 84-69-5	N.D.	N.D.	N.D.	N.D.	0.1	0.005
Conclusion			PASS	PASS	PASS	PASS	-	-

Compound			Material				Limit (%)	RL(%)
			40	45+48	47	50+51+52		
1	DBP	Dibutylphthalate CAS# 84-74-2	N.D.	N.D.	N.D.	N.D.	0.1	0.005
2	BBP	Benzylbutylphthalate CAS# 85-68-7	N.D.	N.D.	N.D.	N.D.	0.1	0.005
3	DEHP	Diethylhexylphthalate CAS# 117-81-7	N.D.	N.D.	N.D.	N.D.	0.1	0.005
4	DIBP	Diisobutyl phthalate CAS# 84-69-5	N.D.	N.D.	N.D.	N.D.	0.1	0.005
Conclusion			PASS	PASS	PASS	PASS	-	-

Compound			Material				Limit (%)	RL(%)
			53	56	57	59		
1	DBP	Dibutylphthalate CAS# 84-74-2	N.D.	N.D.	N.D.	N.D.	0.1	0.005
2	BBP	Benzylbutylphthalate CAS# 85-68-7	N.D.	N.D.	N.D.	N.D.	0.1	0.005
3	DEHP	Diethylhexylphthalate CAS# 117-81-7	N.D.	N.D.	N.D.	N.D.	0.1	0.005
4	DIBP	Diisobutyl phthalate CAS# 84-69-5	N.D.	N.D.	N.D.	N.D.	0.1	0.005
Conclusion			PASS	PASS	PASS	PASS	-	-

This report is issued by the company in accordance with the requirements of the "Conditions of Issuance of Test Reports" printed in the attached page. Unless otherwise stated, the results presented in this report only apply to the samples tested this time. Partial reproduction of this report is not allowed unless approved by the company in writing.

Guangzhou Depuhua Test Services Co. Ltd.

A301&A401, 3/F.&4/F., Xinghui Building, Guanqiao, Shilou, Panyu District, Guangzhou, Guangdong, China
Phone: +86 (0)20-84503814 Fax: +86 (0)20-6664 1699

e-mail: dphrp@dphl.com
Web: http://www.dphl.com



中国认可
国际互认
检测
TESTING
CNAS L11364

TEST REPORT

Report No.: STSGZ2411043119E

Date: 4-Dec-2024

Page 14 of 31

Compound			Material				Limit (%)	RL(%)
			61+63	64	77+78+79	81+85		
1	DBP	Dibutylphthalate CAS# 84-74-2	N.D.	N.D.	N.D.	N.D.	0.1	0.005
2	BBP	Benzylbutylphthalate CAS# 85-68-7	N.D.	N.D.	N.D.	N.D.	0.1	0.005
3	DEHP	Diethylhexylphthalate CAS# 117-81-7	N.D.	N.D.	N.D.	N.D.	0.1	0.005
4	DIBP	Diisobutyl phthalate CAS# 84-69-5	N.D.	N.D.	N.D.	N.D.	0.1	0.005
Conclusion			PASS	PASS	PASS	PASS	-	-

Compound			Material				Limit (%)	RL(%)
			83+87	84	88	90		
1	DBP	Dibutylphthalate CAS# 84-74-2	N.D.	N.D.	N.D.	N.D.	0.1	0.005
2	BBP	Benzylbutylphthalate CAS# 85-68-7	N.D.	N.D.	N.D.	N.D.	0.1	0.005
3	DEHP	Diethylhexylphthalate CAS# 117-81-7	N.D.	N.D.	N.D.	N.D.	0.1	0.005
4	DIBP	Diisobutyl phthalate CAS# 84-69-5	N.D.	N.D.	N.D.	N.D.	0.1	0.005
Conclusion			PASS	PASS	PASS	PASS	-	-

Compound			Material				Limit (%)	RL(%)
			92+93+94	95	98+99	101		
1	DBP	Dibutylphthalate CAS# 84-74-2	N.D.	N.D.	N.D.	N.D.	0.1	0.005
2	BBP	Benzylbutylphthalate CAS# 85-68-7	N.D.	N.D.	N.D.	N.D.	0.1	0.005
3	DEHP	Diethylhexylphthalate CAS# 117-81-7	N.D.	N.D.	N.D.	N.D.	0.1	0.005
4	DIBP	Diisobutyl phthalate CAS# 84-69-5	N.D.	N.D.	N.D.	N.D.	0.1	0.005
Conclusion			PASS	PASS	PASS	PASS	-	-

This report is issued by the company in accordance with the requirements of the "Conditions of Issuance of Test Reports" printed in the attached page. Unless otherwise stated, the results presented in this report only apply to the samples tested this time. Partial reproduction of this report is not allowed unless approved by the company in writing.

Guangzhou Depuhua Test Services Co. Ltd.

A301&A401, 3/F.&4/F., Xinghui Building, Guanqiao, Shilou, Panyu District, Guangzhou, Guangdong, China
Phone: +86 (0)20-84503814 Fax: +86 (0)20-6664 1699

e-mail: dphrp@dphl.com
Web: http://www.dphl.com



中国认可
国际互认
检测
TESTING
CNAS L11364

TEST REPORT

Report No.: STSGZ2411043119E

Date: 4-Dec-2024

Page 15 of 31

Compound			Material				Limit (%)	RL(%)
			102	104	107	108		
1	DBP	Dibutylphthalate CAS# 84-74-2	N.D.	N.D.	N.D.	N.D.	0.1	0.005
2	BBP	Benzylbutylphthalate CAS# 85-68-7	N.D.	N.D.	N.D.	N.D.	0.1	0.005
3	DEHP	Diethylhexylphthalate CAS# 117-81-7	N.D.	N.D.	N.D.	N.D.	0.1	0.005
4	DIBP	Diisobutyl phthalate CAS# 84-69-5	N.D.	N.D.	N.D.	N.D.	0.1	0.005
Conclusion			PASS	PASS	PASS	PASS	-	-

Compound			Material				Limit (%)	RL(%)
			110+111	113+114	115+116	117		
1	DBP	Dibutylphthalate CAS# 84-74-2	N.D.	N.D.	N.D.	N.D.	0.1	0.005
2	BBP	Benzylbutylphthalate CAS# 85-68-7	N.D.	N.D.	N.D.	N.D.	0.1	0.005
3	DEHP	Diethylhexylphthalate CAS# 117-81-7	N.D.	N.D.	N.D.	N.D.	0.1	0.005
4	DIBP	Diisobutyl phthalate CAS# 84-69-5	N.D.	N.D.	N.D.	N.D.	0.1	0.005
Conclusion			PASS	PASS	PASS	PASS	-	-

Compound			Material				Limit (%)	RL(%)
			120	121+123	125+127	128		
1	DBP	Dibutylphthalate CAS# 84-74-2	N.D.	N.D.	N.D.	N.D.	0.1	0.005
2	BBP	Benzylbutylphthalate CAS# 85-68-7	N.D.	N.D.	N.D.	N.D.	0.1	0.005
3	DEHP	Diethylhexylphthalate CAS# 117-81-7	N.D.	N.D.	N.D.	N.D.	0.1	0.005
4	DIBP	Diisobutyl phthalate CAS# 84-69-5	N.D.	N.D.	N.D.	N.D.	0.1	0.005
Conclusion			PASS	PASS	PASS	PASS	-	-

This report is issued by the company in accordance with the requirements of the "Conditions of Issuance of Test Reports" printed in the attached page. Unless otherwise stated, the results presented in this report only apply to the samples tested this time. Partial reproduction of this report is not allowed unless approved by the company in writing.

Guangzhou Depuhua Test Services Co. Ltd.

A301&A401, 3/F.&4/F., Xinghui Building, Guanqiao, Shilou, Panyu District, Guangzhou, Guangdong, China
Phone: +86 (0)20-84503814 Fax: +86 (0)20-6664 1699

e-mail: dphrp@dphl.com
Web: http://www.dphl.com



中国认可
国际互认
检测
TESTING
CNAS L11364

TEST REPORT

Report No.: STSGZ2411043119E

Date: 4-Dec-2024

Page 16 of 31

Compound			Material				Limit (%)	RL(%)
			129	130	131	132+135		
1	DBP	Dibutylphthalate CAS# 84-74-2	N.D.	N.D.	N.D.	N.D.	0.1	0.005
2	BBP	Benzylbutylphthalate CAS# 85-68-7	N.D.	N.D.	N.D.	N.D.	0.1	0.005
3	DEHP	Diethylhexylphthalate CAS# 117-81-7	N.D.	N.D.	N.D.	N.D.	0.1	0.005
4	DIBP	Diisobutyl phthalate CAS# 84-69-5	N.D.	N.D.	N.D.	N.D.	0.1	0.005
Conclusion			PASS	PASS	PASS	PASS	-	-

Compound			Material				Limit (%)	RL(%)
			137+138 +139	142	143	144+145 +146		
1	DBP	Dibutylphthalate CAS# 84-74-2	N.D.	N.D.	N.D.	N.D.	0.1	0.005
2	BBP	Benzylbutylphthalate CAS# 85-68-7	N.D.	N.D.	N.D.	N.D.	0.1	0.005
3	DEHP	Diethylhexylphthalate CAS# 117-81-7	N.D.	N.D.	N.D.	N.D.	0.1	0.005
4	DIBP	Diisobutyl phthalate CAS# 84-69-5	N.D.	N.D.	N.D.	N.D.	0.1	0.005
Conclusion			PASS	PASS	PASS	PASS	-	-

Compound			Material				Limit (%)	RL(%)
			147+148	149+150	153+155	154		
1	DBP	Dibutylphthalate CAS# 84-74-2	N.D.	N.D.	N.D.	N.D.	0.1	0.005
2	BBP	Benzylbutylphthalate CAS# 85-68-7	N.D.	N.D.	N.D.	N.D.	0.1	0.005
3	DEHP	Diethylhexylphthalate CAS# 117-81-7	N.D.	N.D.	N.D.	N.D.	0.1	0.005
4	DIBP	Diisobutyl phthalate CAS# 84-69-5	N.D.	N.D.	N.D.	N.D.	0.1	0.005
Conclusion			PASS	PASS	PASS	PASS	-	-

This report is issued by the company in accordance with the requirements of the "Conditions of Issuance of Test Reports" printed in the attached page. Unless otherwise stated, the results presented in this report only apply to the samples tested this time. Partial reproduction of this report is not allowed unless approved by the company in writing.

Guangzhou Depuhua Test Services Co. Ltd.

A301&A401, 3/F.&4/F., Xinghui Building, Guanqiao, Shilou, Panyu District, Guangzhou, Guangdong, China
Phone: +86 (0)20-84503814 Fax: +86 (0)20-6664 1699

e-mail: dphrp@dphl.com
Web: http://www.dphl.com



中国认可
国际互认
检测
TESTING
CNAS L11364

TEST REPORT

Report No.: STSGZ2411043119E

Date: 4-Dec-2024

Page 17 of 31

Compound			Material				Limit (%)	RL(%)
			157	158	159	162		
1	DBP	Dibutylphthalate CAS# 84-74-2	N.D.	N.D.	N.D.	N.D.	0.1	0.005
2	BBP	Benzylbutylphthalate CAS# 85-68-7	N.D.	N.D.	N.D.	N.D.	0.1	0.005
3	DEHP	Diethylhexylphthalate CAS# 117-81-7	N.D.	N.D.	N.D.	N.D.	0.1	0.005
4	DIBP	Diisobutyl phthalate CAS# 84-69-5	N.D.	N.D.	N.D.	N.D.	0.1	0.005
Conclusion			PASS	PASS	PASS	PASS	-	-

Compound			Material				Limit (%)	RL(%)
			163	164	166+167	168+169		
1	DBP	Dibutylphthalate CAS# 84-74-2	N.D.	N.D.	N.D.	N.D.	0.1	0.005
2	BBP	Benzylbutylphthalate CAS# 85-68-7	N.D.	N.D.	N.D.	N.D.	0.1	0.005
3	DEHP	Diethylhexylphthalate CAS# 117-81-7	N.D.	N.D.	N.D.	N.D.	0.1	0.005
4	DIBP	Diisobutyl phthalate CAS# 84-69-5	N.D.	N.D.	N.D.	N.D.	0.1	0.005
Conclusion			PASS	PASS	PASS	PASS	-	-

Compound			Material				Limit (%)	RL(%)
			172	174+175	173+177 +179	178		
1	DBP	Dibutylphthalate CAS# 84-74-2	N.D.	N.D.	N.D.	N.D.	0.1	0.005
2	BBP	Benzylbutylphthalate CAS# 85-68-7	N.D.	N.D.	N.D.	N.D.	0.1	0.005
3	DEHP	Diethylhexylphthalate CAS# 117-81-7	N.D.	N.D.	N.D.	N.D.	0.1	0.005
4	DIBP	Diisobutyl phthalate CAS# 84-69-5	N.D.	N.D.	N.D.	N.D.	0.1	0.005
Conclusion			PASS	PASS	PASS	PASS	-	-

Remark(s): (a) RL: Report limit
(b) N.D.: Not detected (result is less than RL)

This report is issued by the company in accordance with the requirements of the "Conditions of Issuance of Test Reports" printed in the attached page. Unless otherwise stated, the results presented in this report only apply to the samples tested this time. Partial reproduction of this report is not allowed unless approved by the company in writing.

Guangzhou Depuhua Test Services Co. Ltd.

A301&A401, 3/F.&4/F., Xinghui Building, Guanqiao, Shilou, Panyu District, Guangzhou, Guangdong, China
Phone: +86 (0)20-84503814 Fax: +86 (0)20-6664 1699

e-mail: dphrp@dphl.com
Web: http://www.dphl.com

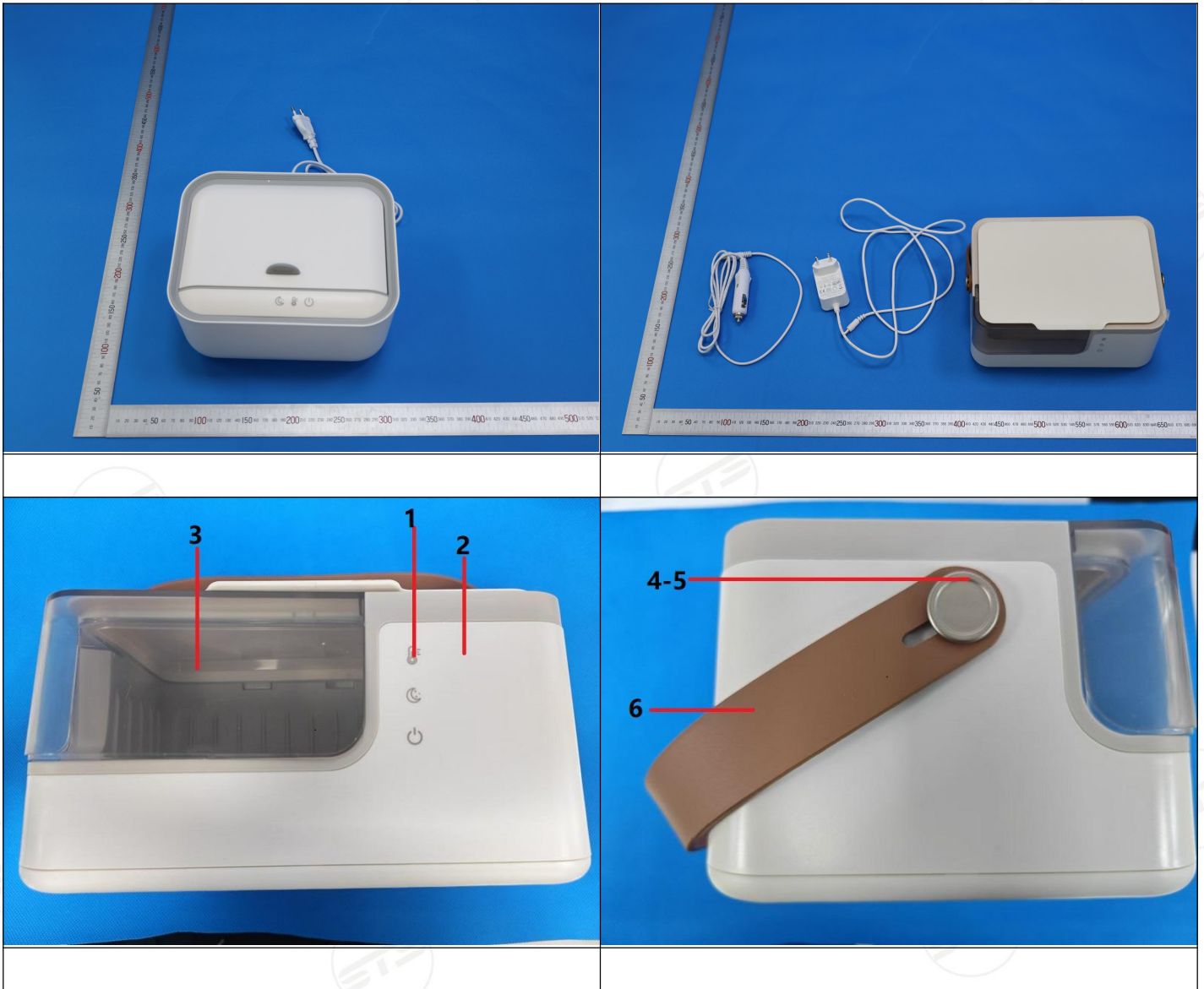
TEST REPORT

Report No.: STSGZ2411043119E

Date: 4-Dec-2024

Page 18 of 31

Photo(s):



This report is issued by the company in accordance with the requirements of the "Conditions of Issuance of Test Reports" printed in the attached page. Unless otherwise stated, the results presented in this report only apply to the samples tested this time. Partial reproduction of this report is not allowed unless approved by the company in writing.

Guangzhou Depuhua Test Services Co. Ltd.

A301&A401, 3/F.&4/F., Xinghui Building, Guanqiao, Shilou, Panyu District, Guangzhou, Guangdong, China
Phone: +86 (0)20-84503814 Fax: +86 (0)20-6664 1699

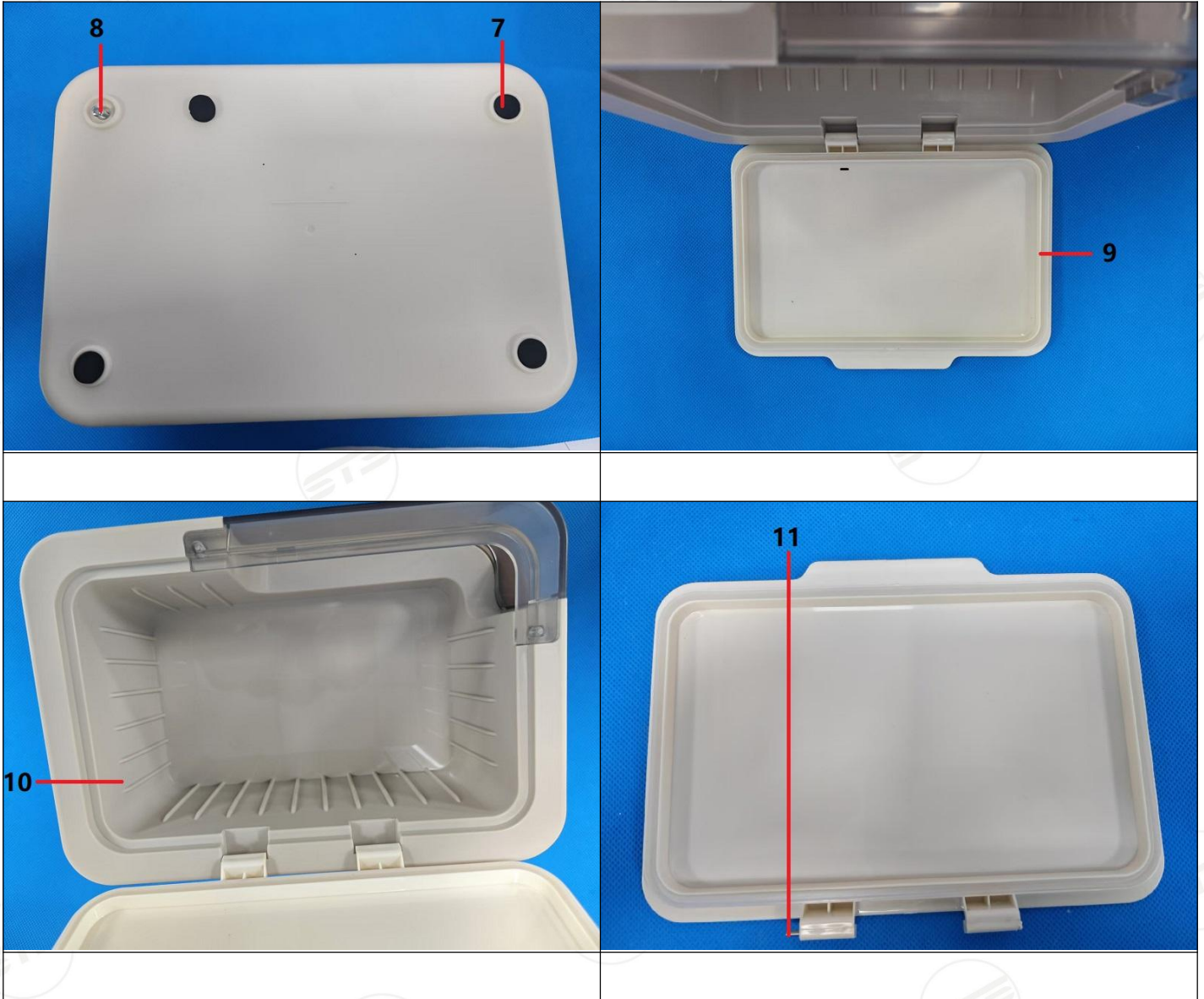
e-mail: dphrp@dphl.com
Web: http://www.dphtl.com

TEST REPORT

Report No.: STSGZ2411043119E

Date: 4-Dec-2024

Page 19 of 31



This report is issued by the company in accordance with the requirements of the "Conditions of Issuance of Test Reports" printed in the attached page. Unless otherwise stated, the results presented in this report only apply to the samples tested this time. Partial reproduction of this report is not allowed unless approved by the company in writing.

Guangzhou Depuhua Test Services Co. Ltd.

A301&A401, 3/F.&4/F., Xinghui Building, Guanqiao, Shilou, Panyu District, Guangzhou, Guangdong, China
Phone: +86 (0)20-84503814 Fax: +86 (0)20-6664 1699

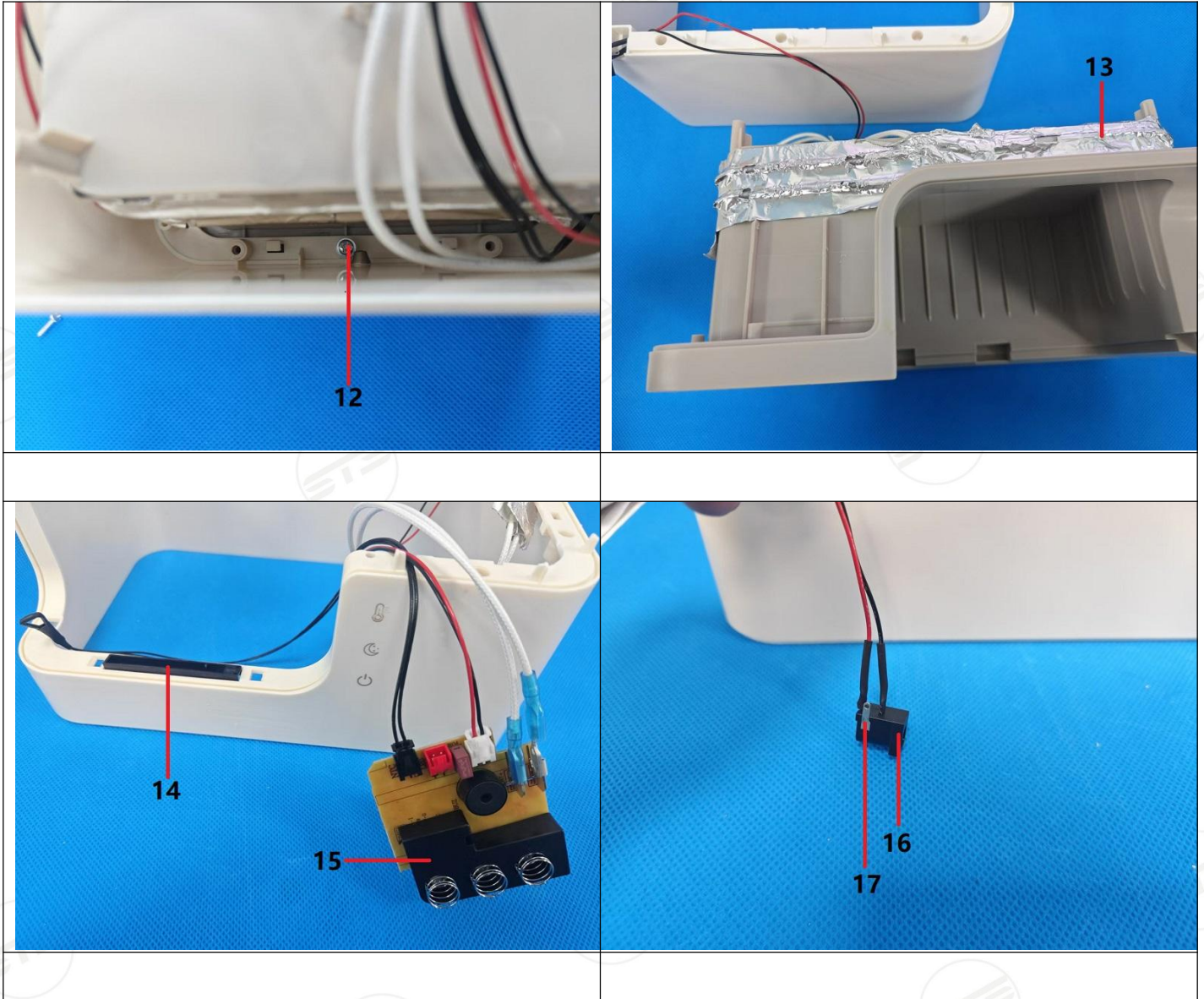
e-mail: dphrp@dphl.com
Web: <http://www.dphtl.com>

TEST REPORT

Report No.: STSGZ2411043119E

Date: 4-Dec-2024

Page 20 of 31



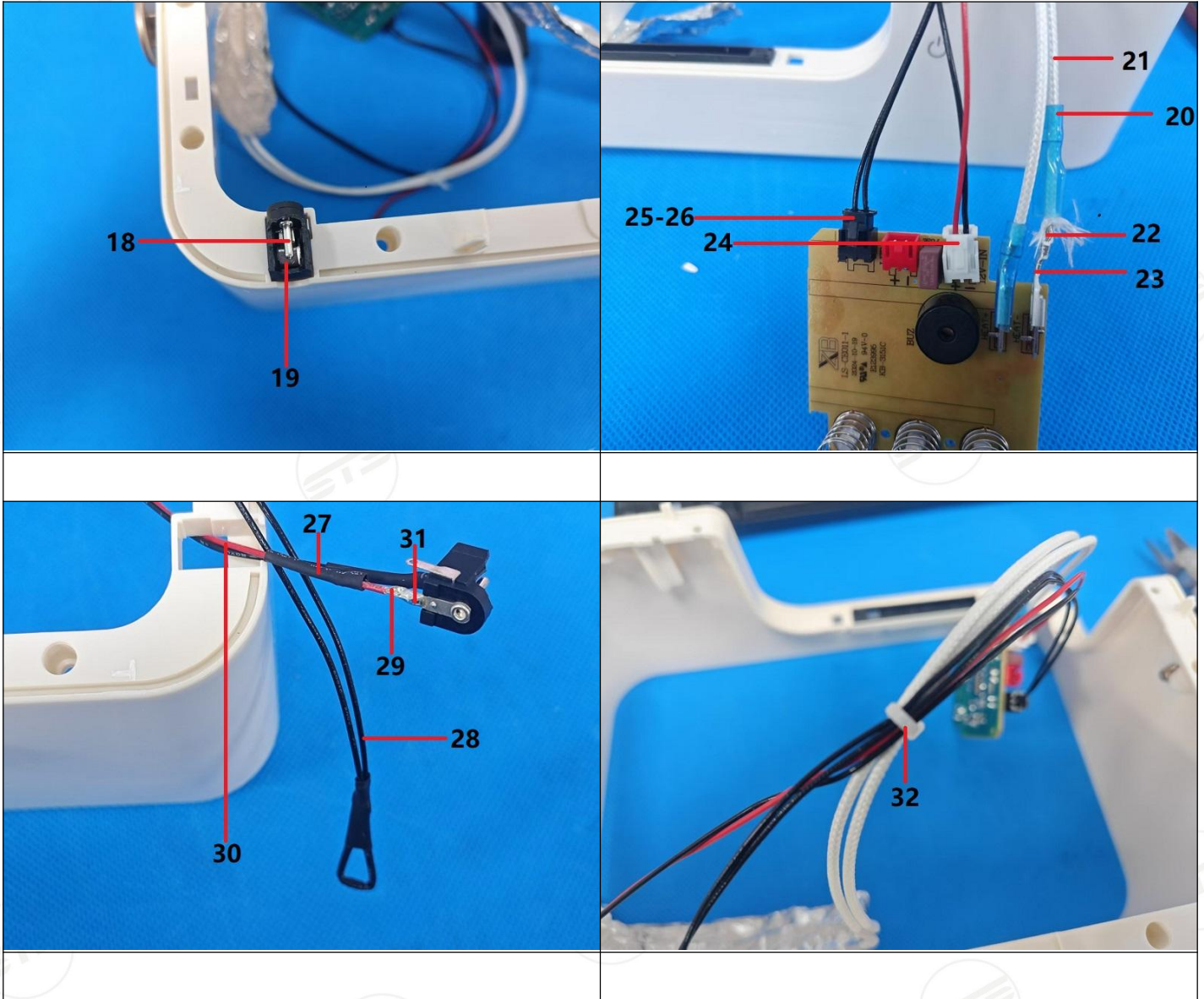
This report is issued by the company in accordance with the requirements of the "Conditions of Issuance of Test Reports" printed in the attached page. Unless otherwise stated, the results presented in this report only apply to the samples tested this time. Partial reproduction of this report is not allowed unless approved by the company in writing.

TEST REPORT

Report No.: STSGZ2411043119E

Date: 4-Dec-2024

Page 21 of 31



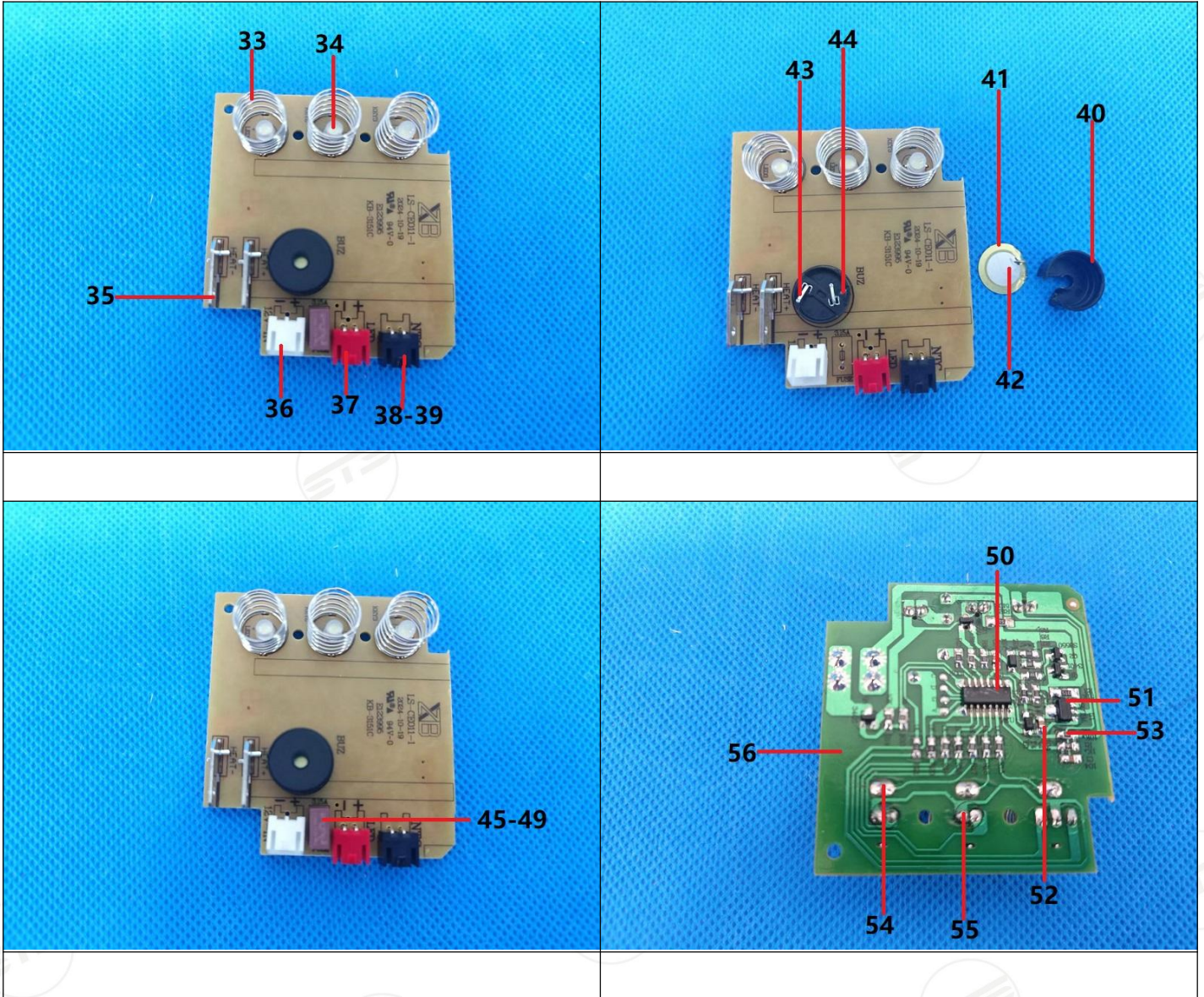
This report is issued by the company in accordance with the requirements of the "Conditions of Issuance of Test Reports" printed in the attached page. Unless otherwise stated, the results presented in this report only apply to the samples tested this time. Partial reproduction of this report is not allowed unless approved by the company in writing.

TEST REPORT

Report No.: STSGZ2411043119E

Date: 4-Dec-2024

Page 22 of 31



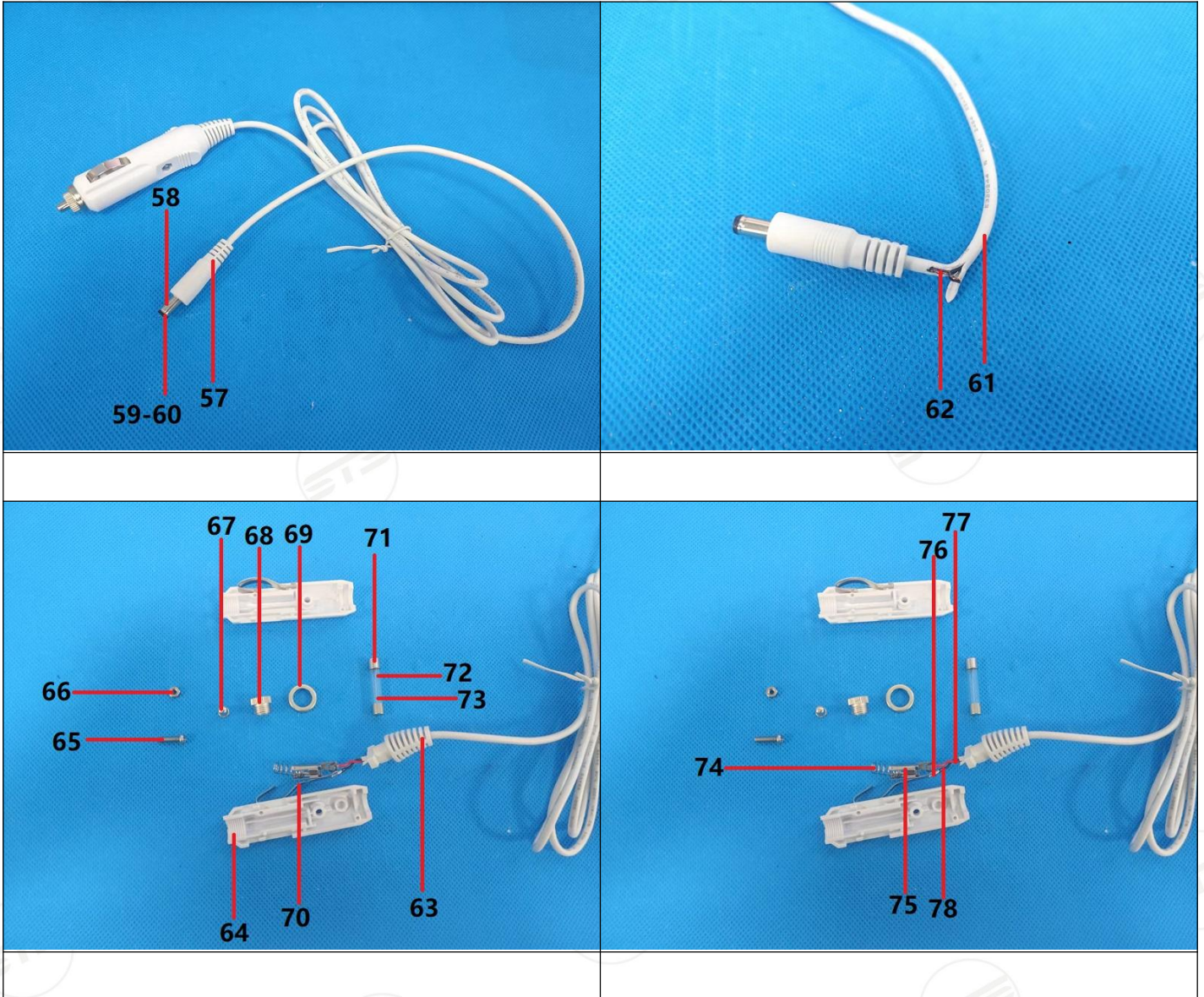
This report is issued by the company in accordance with the requirements of the "Conditions of Issuance of Test Reports" printed in the attached page. Unless otherwise stated, the results presented in this report only apply to the samples tested this time. Partial reproduction of this report is not allowed unless approved by the company in writing.

TEST REPORT

Report No.: STSGZ2411043119E

Date: 4-Dec-2024

Page 23 of 31



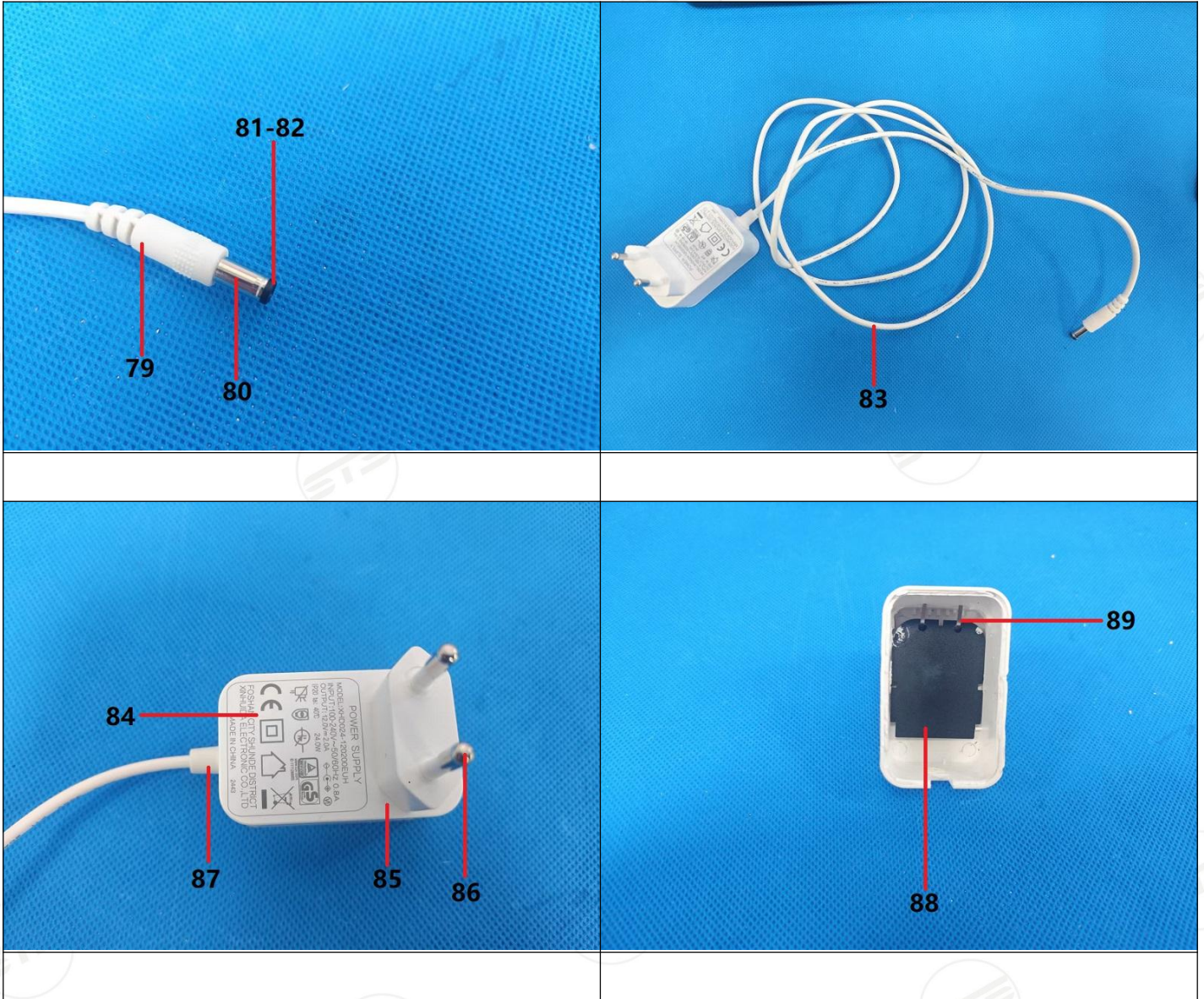
This report is issued by the company in accordance with the requirements of the "Conditions of Issuance of Test Reports" printed in the attached page. Unless otherwise stated, the results presented in this report only apply to the samples tested this time. Partial reproduction of this report is not allowed unless approved by the company in writing.

TEST REPORT

Report No.: STSGZ2411043119E

Date: 4-Dec-2024

Page 24 of 31



This report is issued by the company in accordance with the requirements of the "Conditions of Issuance of Test Reports" printed in the attached page. Unless otherwise stated, the results presented in this report only apply to the samples tested this time. Partial reproduction of this report is not allowed unless approved by the company in writing.

Guangzhou Depuhua Test Services Co. Ltd.

A301&A401, 3/F.&4/F., Xinghui Building, Guanqiao, Shilou, Panyu District, Guangzhou, Guangdong, China
Phone: +86 (0)20-84503814 Fax: +86 (0)20-6664 1699

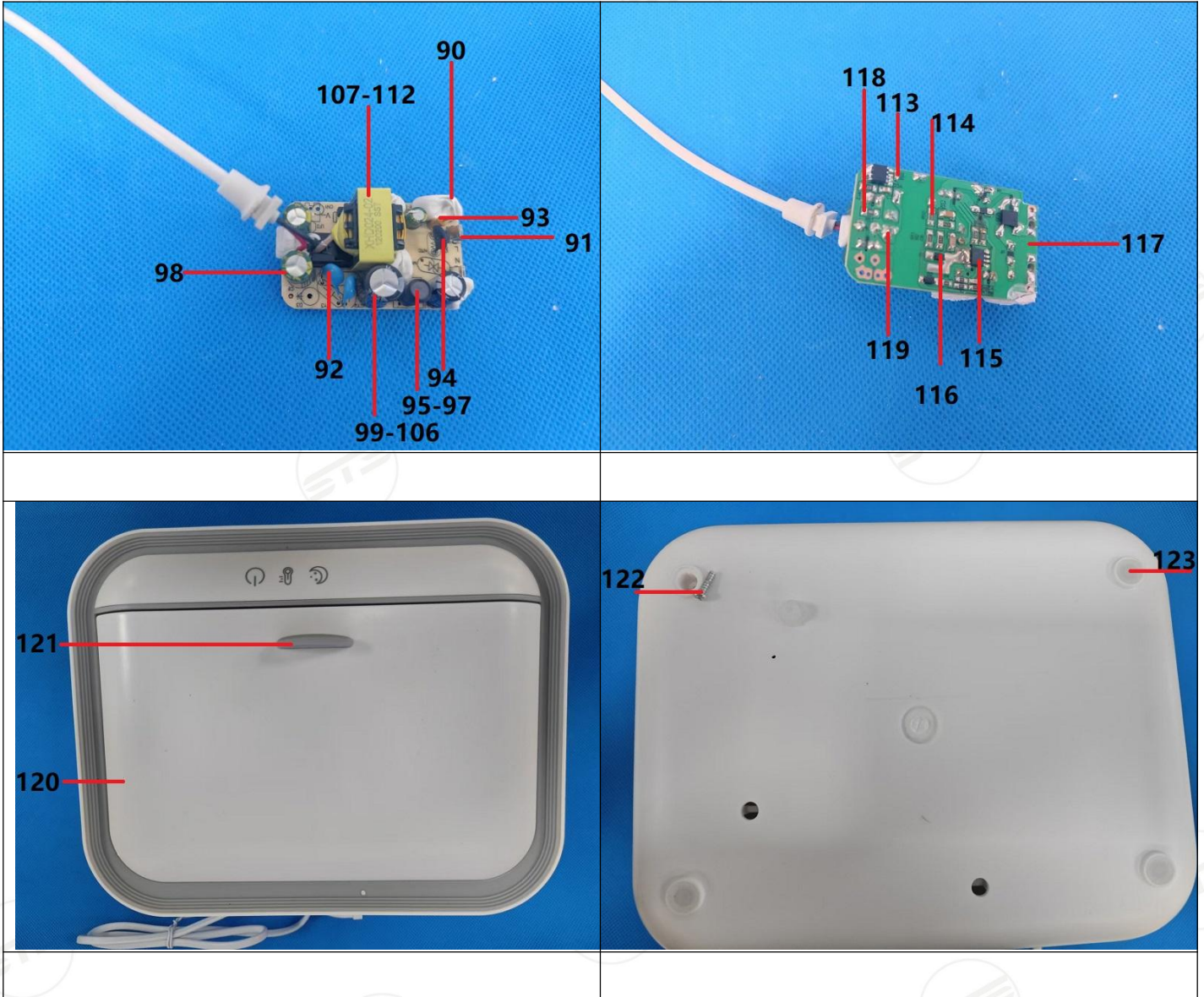
e-mail: dphrp@dphl.com
Web: http://www.dphl.com

TEST REPORT

Report No.: STSGZ2411043119E

Date: 4-Dec-2024

Page 25 of 31



This report is issued by the company in accordance with the requirements of the "Conditions of Issuance of Test Reports" printed in the attached page. Unless otherwise stated, the results presented in this report only apply to the samples tested this time. Partial reproduction of this report is not allowed unless approved by the company in writing.

TEST REPORT

Report No.: STSGZ2411043119E

Date: 4-Dec-2024

Page 26 of 31



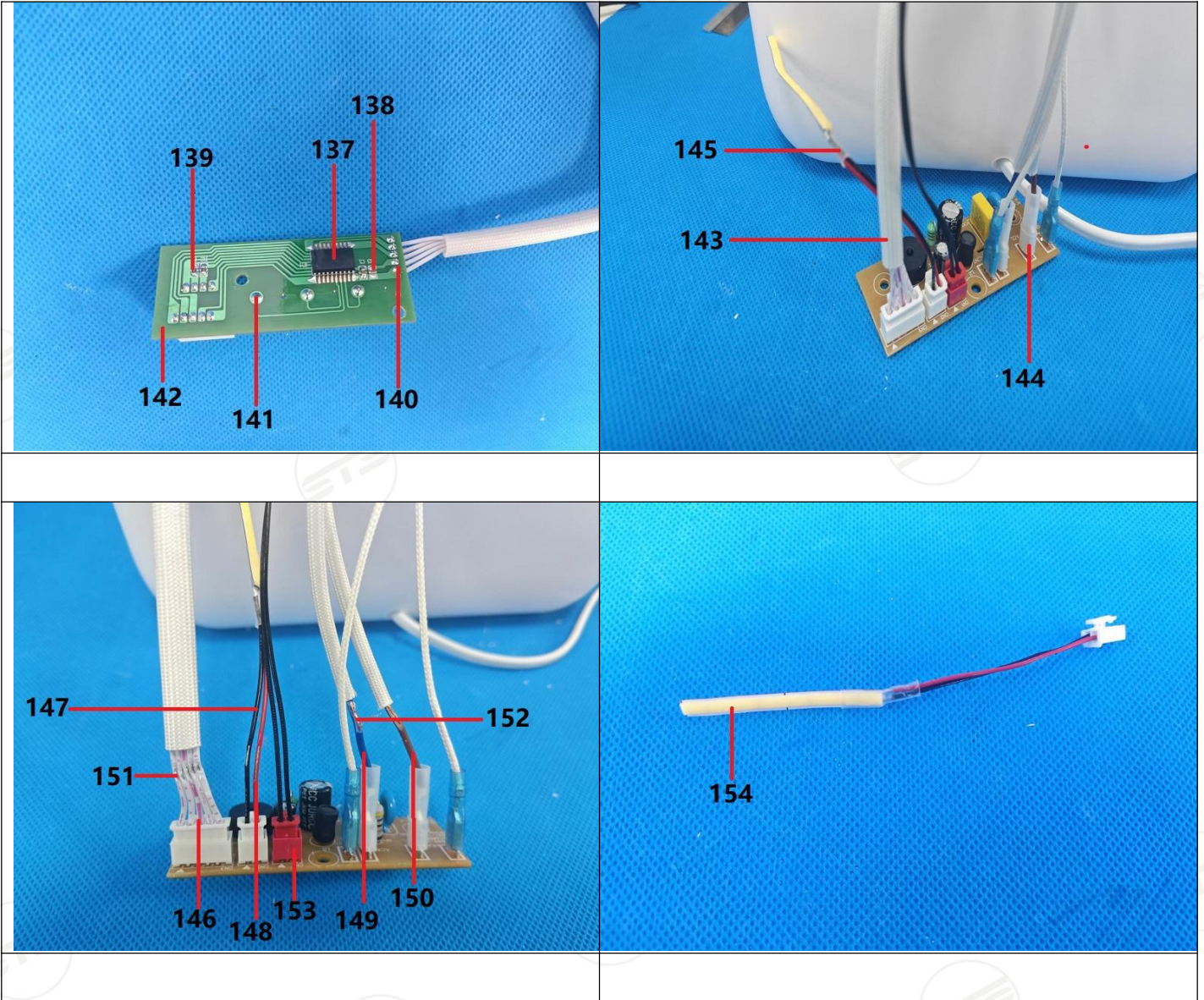
This report is issued by the company in accordance with the requirements of the "Conditions of Issuance of Test Reports" printed in the attached page. Unless otherwise stated, the results presented in this report only apply to the samples tested this time. Partial reproduction of this report is not allowed unless approved by the company in writing.

TEST REPORT

Report No.: STSGZ2411043119E

Date: 4-Dec-2024

Page 27 of 31



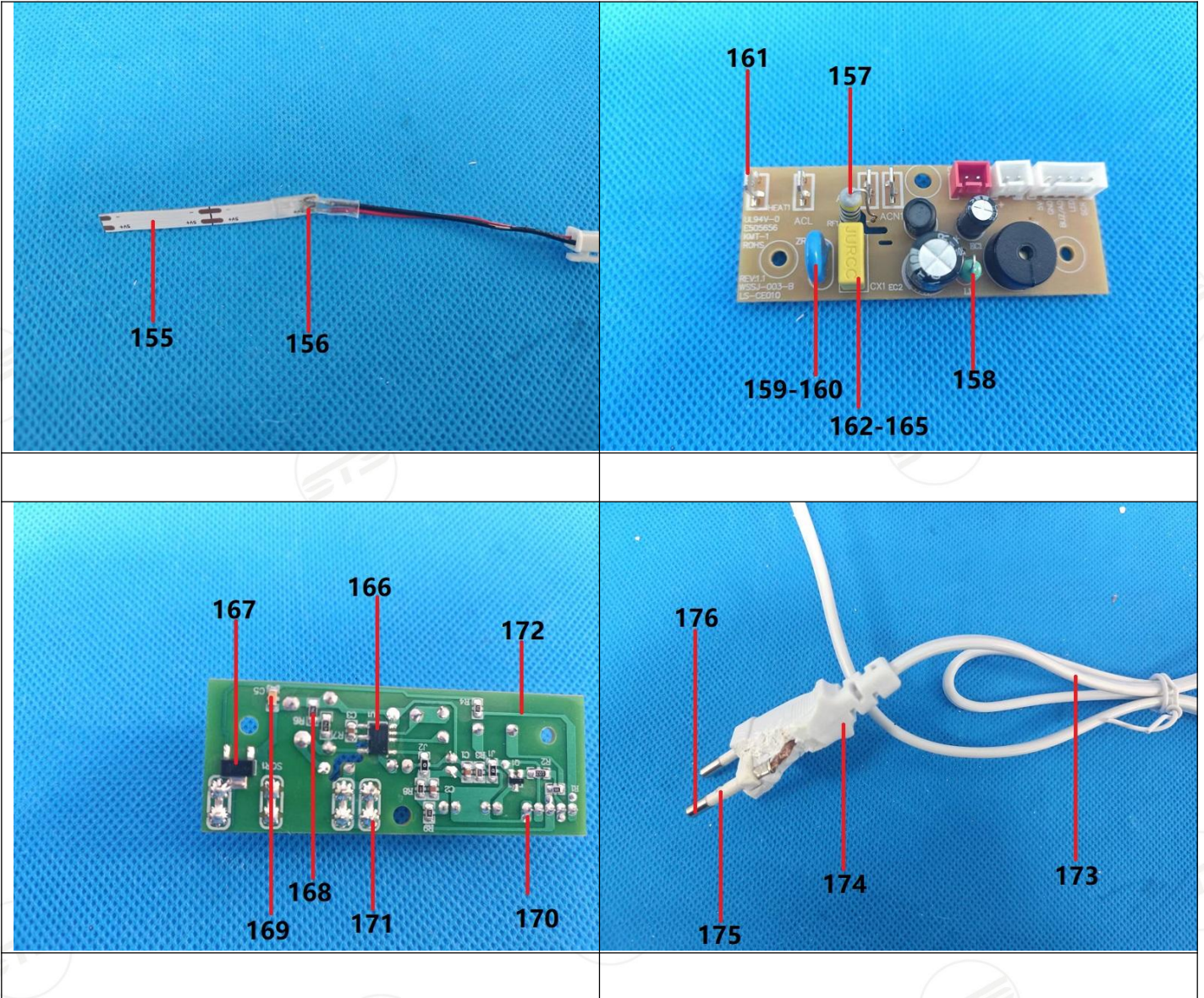
This report is issued by the company in accordance with the requirements of the "Conditions of Issuance of Test Reports" printed in the attached page. Unless otherwise stated, the results presented in this report only apply to the samples tested this time. Partial reproduction of this report is not allowed unless approved by the company in writing.

TEST REPORT

Report No.: STSGZ2411043119E

Date: 4-Dec-2024

Page 28 of 31



This report is issued by the company in accordance with the requirements of the "Conditions of Issuance of Test Reports" printed in the attached page. Unless otherwise stated, the results presented in this report only apply to the samples tested this time. Partial reproduction of this report is not allowed unless approved by the company in writing.

Guangzhou Depuhua Test Services Co. Ltd.

A301&A401, 3/F.&4/F., Xinghui Building, Guanqiao, Shilou, Panyu District, Guangzhou, Guangdong, China
Phone: +86 (0)20-84503814 Fax: +86 (0)20-6664 1699

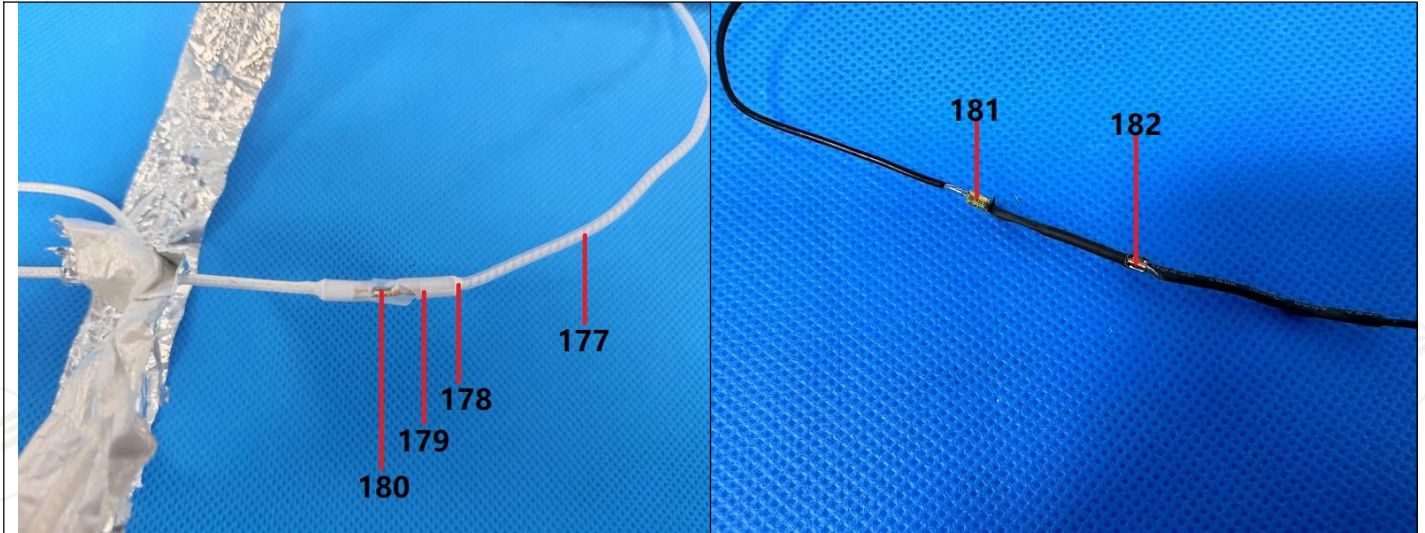
e-mail: dphrp@dphl.com
Web: http://www.dphtl.com

TEST REPORT

Report No.: STSGZ2411043119E

Date: 4-Dec-2024

Page 29 of 31



Product Photo

Appendix A

LS-BXYZ{(X=0,1,2,3,4,5,6,7,8,9)(Y=0,1,2,3,4,5,6,7,8,9)(Z=0,1,2,3,4,5,6,7,8,9)}

LS-BXYZ-N{(X=0,1,2,3,4,5,6,7,8,9)(Y=0,1,2,3,4,5,6,7,8,9)(Z=0,1,2,3,4,5,6,7,8,9)(N=1,2,3)}

LS-BXYZM{(X=0,1,2,3,4,5,6,7,8,9)(Y=0,1,2,3,4,5,6,7,8,9)(Z=0,1,2,3,4,5,6,7,8,9) (M=A,B,C,D) }

LS-BXYZM-N{(X=0,1,2,3,4,5,6,7,8,9)(Y=0,1,2,3,4,5,6,7,8,9)(Z=0,1,2,3,4,5,6,7,8,9) (M=A,B,C,D) (N=1,2,3)}

LS-BEXYZ{(X=0,1,2,3,4,5,6,7,8,9)(Y=0,1,2,3,4,5,6,7,8,9)(Z=0,1,2,3,4,5,6,7,8,9)}

LS-BEXYZ-N{(X=0,1,2,3,4,5,6,7,8,9)(Y=0,1,2,3,4,5,6,7,8,9)(Z=0,1,2,3,4,5,6,7,8,9)(N=1,2,3)}

LS-BEXYZM{(X=0,1,2,3,4,5,6,7,8,9)(Y=0,1,2,3,4,5,6,7,8,9)(Z=0,1,2,3,4,5,6,7,8,9) (M=A,B,C,D,L) }

LS-BEXYZM-N{(X=0,1,2,3,4,5,6,7,8,9)(Y=0,1,2,3,4,5,6,7,8,9)(Z=0,1,2,3,4,5,6,7,8,9) (M=A,B,C,D) (N=1,2,3)}

LS-BXY{(X=0,1,2,3,4,5,6,7,8,9)(Y=0,1,2,3,4,5,6,7,8,9)}

LS-BXY-N{(X=0,1,2,3,4,5,6,7,8,9)(Y=0,1,2,3,4,5,6,7,8,9)(N=1,2,3)}

LS-BXYM{(X=0,1,2,3,4,5,6,7,8,9)(Y=0,1,2,3,4,5,6,7,8,9) (M=A,B,C,D) }

LS-BXYM-N{(X=0,1,2,3,4,5,6,7,8,9)(Y=0,1,2,3,4,5,6,7,8,9) (M=A,B,C,D) (N=1,2,3)}

LS-BEXY{(X=0,1,2,3,4,5,6,7,8,9)(Y=0,1,2,3,4,5,6,7,8,9)}

LS-BEXY-N{(X=0,1,2,3,4,5,6,7,8,9)(Y=0,1,2,3,4,5,6,7,8,9)(N=1,2,3)}

This report is issued by the company in accordance with the requirements of the "Conditions of Issuance of Test Reports" printed in the attached page. Unless otherwise stated, the results presented in this report only apply to the samples tested this time. Partial reproduction of this report is not allowed unless approved by the company in writing.



中国认可
国际互认
检测
TESTING
CNAS L11364

TEST REPORT

Report No.: STSGZ2411043119E

Date: 4-Dec-2024

Page 30 of 31

LS-BEXYM{(X=0,1,2,3,4,5,6,7,8,9)(Y=0,1,2,3,4,5,6,7,8,9) (M=A,B,C,D) }

LS-BEXYM-N{(X=0,1,2,3,4,5,6,7,8,9)(Y=0,1,2,3,4,5,6,7,8,9) (M=A,B,C,D) (N=1,2,3)}

LS-BBXYZ{(X=0,1,2,3,4,5,6,7,8,9)(Y=0,1,2,3,4,5,6,7,8,9)(Z=0,1,2,3,4,5,6,7,8,9)}

LS-BBXYZ-N{(X=0,1,2,3,4,5,6,7,8,9)(Y=0,1,2,3,4,5,6,7,8,9)(Z=0,1,2,3,4,5,6,7,8,9)(N=1,2,3)}

LS-BBXYZM{(X=0,1,2,3,4,5,6,7,8,9)(Y=0,1,2,3,4,5,6,7,8,9)(Z=0,1,2,3,4,5,6,7,8,9) (M=A,B,C,D) }

LS-BBXYZM-N{(X=0,1,2,3,4,5,6,7,8,9)(Y=0,1,2,3,4,5,6,7,8,9)(Z=0,1,2,3,4,5,6,7,8,9) (M=A,B,C,D) (N=1,2,3)}

LS-BBEXYZ{(X=0,1,2,3,4,5,6,7,8,9)(Y=0,1,2,3,4,5,6,7,8,9)(Z=0,1,2,3,4,5,6,7,8,9)}

LS-BBEXYZ-N{(X=0,1,2,3,4,5,6,7,8,9)(Y=0,1,2,3,4,5,6,7,8,9)(Z=0,1,2,3,4,5,6,7,8,9)(N=1,2,3)}

LS-BBEXYZM{(X=0,1,2,3,4,5,6,7,8,9)(Y=0,1,2,3,4,5,6,7,8,9)(Z=0,1,2,3,4,5,6,7,8,9) (M=A,B,C,D) }

LS-BBEXYZM-N{(X=0,1,2,3,4,5,6,7,8,9)(Y=0,1,2,3,4,5,6,7,8,9)(Z=0,1,2,3,4,5,6,7,8,9) (M=A,B,C,D) (N=1,2,3)}

LS-AXY{(X=0,1,2,3,4,5,6,7,8,9)(Y=0,1,2,3,4,5,6,7,8,9)}

LS-AXYM{(X=0,1,2,3,4,5,6,7,8,9)(Y=0,1,2,3,4,5,6,7,8,9)(M=A,B,C,D)}

LS-AEX (X=0,1,2,3,4,5,6,7,8,9)

LS-AEXY{(X=0,1,2,3,4,5,6,7,8,9)(Y=0,1,2,3,4,5,6,7,8,9)}

LS-AEXM{(X=0,1,2,3,4,5,6,7,8,9)(M=A,B,C,D)}

LS-AEXYM{(X=0,1,2,3,4,5,6,7,8,9)(Y=0,1,2,3,4,5,6,7,8,9)(M=A,B,C,D) }

LS-DXY {(X=0,1,2,3,4,5,6,7,8,9)(Y=0,1,2,3,4, 5,6,7,8,9)}

LS-DXYM {(X=0,1,2,3,4,5,6,7,8,9)(Y=0,1,2,3,4, 5,6,7,8,9)(M=A,B,C,D) }

LS-DXYZ {(X=0,1,2,3,4,5,6,7,8,9)(Y=0,1,2,3,4, 5,6,7,8,9)(Z=0,1,2,3,4, 5,6,7,8,9)}

LS-DXYZM {(X=0,1,2,3,4,5,6,7,8,9)(Y=0,1,2,3,4, 5,6,7,8,9)(Z=0,1,2,3,4, 5,6,7,8,9)(M=A,B,C,D) }

LS-PXY{(X=0,1,2,3,4,5,6,7,8,9)(Y=0,1,2,3,4,5,6,7,8,9)}

LS-PXYM{(X=0,1,2,3,4,5,6,7,8,9)(Y=0,1,2,3,4, 5,6,7,8,9)(M=A,B,C,D) }

LS-CEXYZ{(X=0,1,2,3,4,5,6,7,8,9)(Y=0,1,2,3,4,5,6,7,8,9)(Z=0,1,2,3,4,5,6,7,8,9)}

LS-CEXYZM{(X=0,1,2,3,4,5,6,7,8,9)(Y=0,1,2,3,4,5,6,7,8,9)(Z=0,1,2,3,4,5,6,7,8,9) (M=A,B,C,D,L) }

<<<<<< END OF REPORT >>>>>>

This report is issued by the company in accordance with the requirements of the "Conditions of Issuance of Test Reports" printed in the attached page. Unless otherwise stated, the results presented in this report only apply to the samples tested this time. Partial reproduction of this report is not allowed unless approved by the company in writing.

Guangzhou Depuhua Test Services Co. Ltd.

A301&A401, 3/F.&4/F., Xinghui Building, Guanqiao, Shilou, Panyu District, Guangzhou, Guangdong, China
Phone:+86 (0)20-84503814 Fax: +86 (0)20-6664 1699

e-mail: dphrp@dphl.com
Web: http://www.dphl.com



中国认可
国际互认
检测
TESTING
CNAS L11364

TEST REPORT

Report No.: STSGZ2411043119E

Date: 4-Dec-2024

Page 31 of 31

声明 Statement

- 本检测报告首页所列信息中除样品来源、接样日期、检测日期、检测结果和检测结论外，均由委托方提供，委托方对样品的代表性和资料的真实性负责，本实验室不承担任何相关责任。
The information as listed on the first page of this test report was all provided by the client except the sample from, date received, test period, test results and test conclusion. The client shall be responsible for the representativeness of sample and authenticity of materials, for which STS shall bear no responsibilities.
- 本检测报告以实测值进行符合性判定，未考虑不确定度所带来的风险，特别约定、标准或规范中有明确规定的除外。此种判定方式所带来的风险由客户自行承担，本实验室不承担相关责任。
The judgment method of determining the conformity in this test report is according to the measured value without considering the risk caused by uncertainty, unless otherwise clearly stipulated in special agreement, standard or specification. The client shall assume the risk caused by the judgment method, and STS shall not bear related responsibilities.
- 检测报告无批准人签字及“检验检测专用章”无效，未经本实验室书面同意，不得整体或部分复制本报告。
The test report is effective only with both signature and specialized stamp. Without written approval of STS, this report can't be reproduced in full or in part.
- 本检测报告的检测结果仅对送测样品负责，未加盖资质认定标志的检测报告不对社会具有公证证明作用，对于检测数据、结果的使用，所产生的直接或间接损失及一切法律后果，本实验室不承担任何经济和法律责任。
This test data is only responsible for the tested sample. The data and results provided by the report without CMA accreditation are not to prove to the society, and STS is not responsible for any economic and legal responsibility for the use of the test data, the direct or indirect losses resulting from the use of the test and all legal consequences.
- 本检测报告中检测项目标注有下划线则该项目不在本实验室资质认定能力范围内，该项目检测结果仅作为客户委托、科研、教学或内部质量控制等目的使用。
The underlined test item in the report is out of the scope of CMA accreditation. The test result only used for client's requirement, scientific researching ,teaching or internal quality control.
- 其它声明请查阅报告页脚及书面报告末页。
For other statements, please refer to the footer of the report.

This report is issued by the company in accordance with the requirements of the "Conditions of Issuance of Test Reports" printed in the attached page. Unless otherwise stated, the results presented in this report only apply to the samples tested this time. Partial reproduction of this report is not allowed unless approved by the company in writing.

Guangzhou Depuhua Test Services Co. Ltd.

A301&A401, 3/F.&4/F., Xinghui Building, Guanqiao, Shilou, Panyu District, Guangzhou, Guangdong, China
Phone:+86 (0)20-84503814 Fax: +86 (0)20-6664 1699

e-mail: dphrp@dphtl.com
Web:http://www.dphtl.com

签发测试报告条款

Conditions of Issuance of Test Reports

1. 广州市德普华检测技术有限公司(以下简称[公司])为提供符合下述条款的测试和报告,而接受有关样品和货品。本公司基于下述条款提供服务,下述条款为本公司与申请服务的个人、企业或公司(以下简称[客户])的协议。

All samples and goods are accepted by the Guangzhou Depuhua Test Services Co., Ltd. (the "Company") solely for testing and reporting in accordance with the following terms and conditions. The company provides its services on the basis that such terms and conditions constitute express agreement between the Company and any person, firm or company requesting its services (the "Clients").
2. 由此测试申请所发出的任何报告(以下简称[报告]),本公司会严格为客户保密。未经本公司的书面同意,报告的整体或部分不得复制,也不得用于广告或授权的其他用途。然而,客户可以将本公司印制的报告或认可的副本,向其客户、供货商或直接相关的其它人出示或提交。除非相关政府部门、法律或法规要求,否则未经客户同意,本公司不得将报告内容向任何第三方讨论或披露。

Any report issued by Company as a result of this application for testing services (the "Report") shall be issued in confidence to the Clients and the Report will be strictly treated as such by the Company. It may not be reproduced either in its entirety or in part and it may not be used for advertising or other unauthorized purposes without the written consent of the Company. The Clients to whom the Report is issued may, however, show or send it, or a certified copy thereof prepared by the Company to its customer, supplier or other persons directly concerned. The Company will not, without the consent of the Clients, enter into any discussion or correspondence with any third party concerning the contents of the Report, unless required by the relevant governmental authorities, laws or court order.
3. 除非相关政府部门、法律或法院要求,否则未经公司预先书面同意,本公司毋需,也并无义务到法院对有关报告作证。

The Company shall not be called or be liable to be called to give evidence or testimony on the Report in a court of law without its prior written consent, unless required by the relevant governmental authorities, laws or court orders.
4. 除非本公司进行抽样,并已在报告中说明,否则报告中适用于送测的样品(样品信息为客户提供),不适用于批量。

The Report refers only to the tested sample (Sample information is provided by customer) and does not apply to the bulk, unless the sampling has been carried out by the Company and is stated as such in the Report.
5. 如果本公司确定报告被不当地使用,本公司保留撤回报告的权利,并有权要求其它适当的额外赔偿。

In the event of the improper use of the report as determined by the Company, the Company reserves the right to withdraw it, and to adopt any other additional remedies which may be appropriate.
6. 本公司接受样品进行测试的前提是,该测试报告不能作为针对本公司法律行动的依据。

Samples submitted for testing are accepted on the understanding that the Report issued cannot form the basis of, or be the instrument for, any legal action against the Company.
7. 如因使用本公司中心任何报告内的资料,或任何传播信息所描述与之有关的测试或研究导致的任何损失或损害,本公司概不负责。

The Company will not be liable for or accept responsibility for any loss or damage however arising from the use of information contained in any of its Reports or in any communication whatsoever about its said tests or investigations.
8. 若需要在法院审理程序或者仲裁过程中使用测试报告,客户必须在提交测试样品前将该意图告知本公司。

Clients wishing to use the Report in court proceedings or arbitration shall inform the Company to that effect prior to submitting the sample for testing.
9. 该测试报告的支持数据和信息本公司保存 10 年。个别评审机构有特别要求的,检测数据和报告的保存期可依情况变动。一旦超过上述提交的保存期限,数据和信息将被处理掉。任何情况下,本公司不必提供任何被处理的过期数据或信息。即使本公司事先被告知可能会发生相关的损害,本公司在任何情况下也不必承担任何损害,包括(但不限于)补偿性赔偿、利润损失、数据遗失、或任何形式的特殊损害、附带损害、间接损害、从属损害或任何违反约定、违反承诺、侵权(包括疏忽)、产品责任或其他原因的惩罚性损害。

Subject to the variable length of retention time for test data and report stored hereinto as otherwise specifically required by individual accreditation authorities, the Company will only keep the supporting test data and information of the test report for a period of ten years. The data and information will be disposed of after the aforementioned retention period has elapsed. Under no circumstances shall we provide any data and information which has been disposed of after retention period. Under no circumstances shall we be liable for damage of any kind, including (but not limited to) compensatory damages, lost profits, lost data, or any form of special, incidental, indirect, consequential or punitive damages of any kind, whether based on breach of contract of warranty, tort (including negligence), product liability or otherwise, even if we are informed in advance of the possibility of such damages.
10. 报告的签发记录可通过登录 <http://www.dphtl.com/> 查询。如需进一步查询报告有效性或核实报告,需与本公司联系。

Issuance records of the Report are available on the internet at <http://www.dphtl.com/> . Further enquiry of validity or verification of the Report should be addressed to the company.